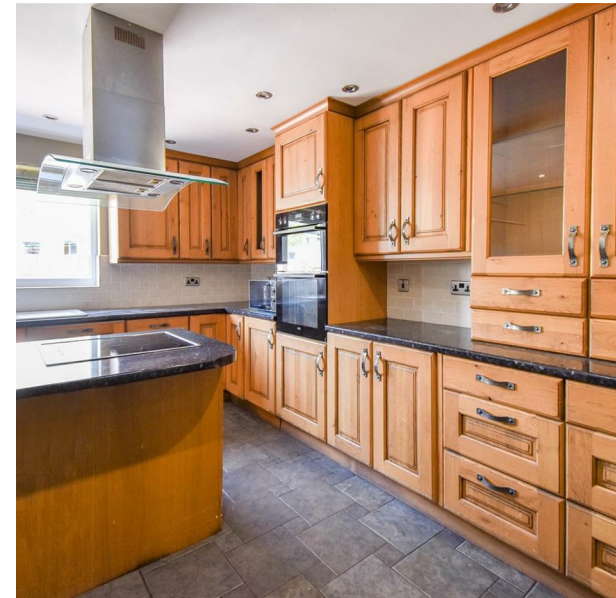


Skiddaw Avenue, Maryport, CA15 6JG

Asking Price £200,000

Council Tax Band: A



A rare opportunity to buy an extended family home in one of the most sought after areas of Maryport.

Located close to the sea brows and with spectacular views of the Solway and Scottish hills beyond, the historic Roman Museum and magical fairy path are right on the doorstep.

The original layout has been extended to provide much more, useable living space. The large lounge, complete with woodburning stove, now opens up into a wonderful sunroom. This large family space offers great views, whatever the weather.

A second reception room has most recently been utilised as a fourth bedroom, and offers added flexibility for use as an office or play room.

The extended kitchen and dining room has lots of worktop and storage space and a central island, as well as room for a family dining table. The kitchen units are quite dated and may need to be upgraded. Integrated appliances include an electric hob, extractor and double oven. The ground floor accommodation is completed by a utility room and tiled shower room.

Upstairs, there are three large bedrooms, a family bathroom and a separate toilet.

Outside, the paved, low maintenance, rear garden is a real suntrap and, with a little imagination, will be a lovely place to relax. The garage and long driveway provide off-street parking for at least four vehicles.

In summary, a large family home in a stunning location. In need of a little TLC, this will be someone's forever home - why not yours?



Open House West Cumbria

