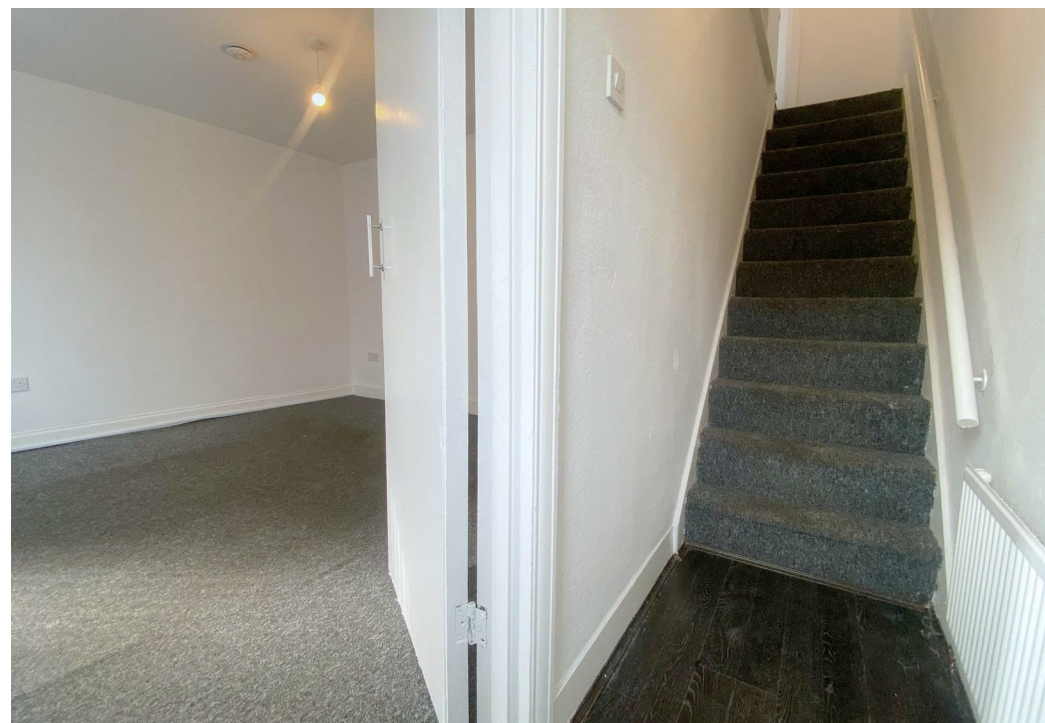


Connaught Road, Luton, LU4 8ES

£1,295 Per Calendar Month

Council Tax Band:



Situated in the sought-after Connaught Road area of Luton, this charming mid-terrace house offers a delightful blend of comfort and convenience, making it an ideal family home.

The property boasts a generous 893 square feet of living space, featuring two inviting reception rooms that provide ample room for relaxation and entertaining.

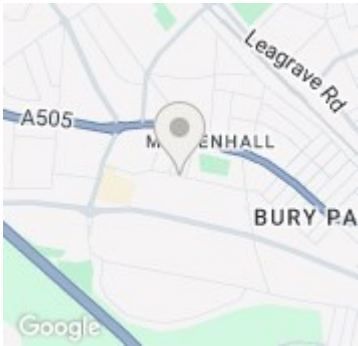
The house comprises of three comfortable bedrooms, making it ideal for families or those looking for extra space. The well-appointed bathroom ensures convenience for daily routines. One of the standout features of this property is the large rear garden, perfect for outdoor activities, gardening, or simply enjoying the fresh air.

Off-road parking adds to the practicality of this home, allowing for easy access and peace of mind. The location is particularly appealing, with a variety of local schools, shops, and a retail park just a stone's throw away, catering to all your daily needs. Additionally, the property offers easy access to the M1 motorway and other transport links, making commuting a breeze.

This delightful family home in a popular location is not to be missed - call today to book a viewing! Lines open 24 hours



Open House Luton



Energy Efficiency Rating		
	Current	Potential
Very energy efficient - lower running costs		
(92 plus) A		91
(81-91) B		
(69-80) C	73	
(55-68) D		
(39-54) E		
(21-38) F		
(1-20) G		
Not energy efficient - higher running costs		
England & Wales	EU Directive 2002/91/EC	