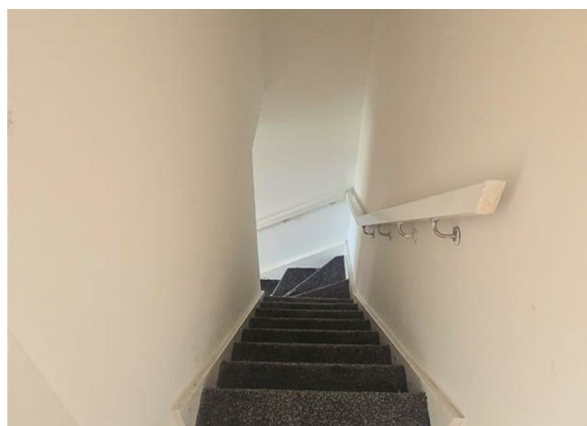
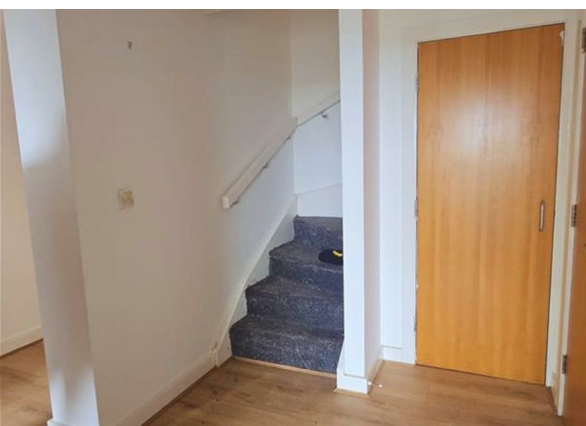
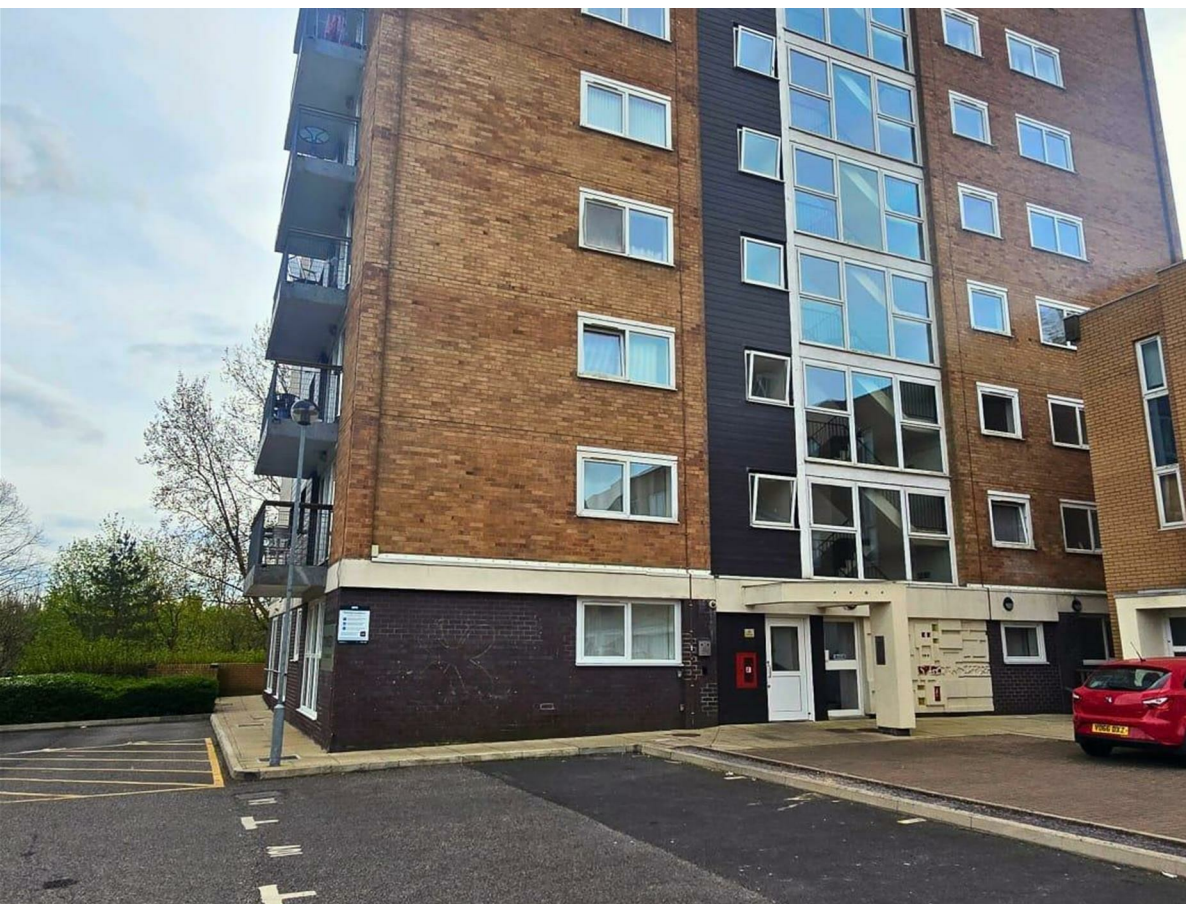


Lakeside Rise, Manchester, M9 8QB

£1,200 Per Month

Council Tax Band: B



Open House South Manchester is pleased to offer you this property nestled in desirable area of Lakeside Rise, Manchester, this charming duplex appartement offers a perfect blend of comfort and convenience. Built in 2006, the property spans an impressive 797 square feet and features two well-proportioned bedrooms, making it an ideal choice for small families, couples, or individuals seeking a peaceful retreat.

Upon entering, you are welcomed into a spacious reception room that provides a warm and inviting atmosphere, perfect for relaxation or entertaining guests. The layout is thoughtfully designed to maximise space and functionality, ensuring that every corner of the home is utilised effectively. The property also boasts a modern bathroom, catering to all your daily needs.

Lakeside Rise is not only a tranquil residential area but also benefits from excellent local amenities. Residents will find a variety of shops, supermarkets, cafes, and restaurants within easy reach, ensuring that daily essentials are never far away. For those who enjoy the outdoors, nearby parks and recreational areas offer a perfect escape for leisurely strolls or family outings.

Transport links in the area are superb, with convenient access to public transport options including buses and trains, making commuting to Manchester city centre and beyond a breeze. This connectivity is ideal for professionals and families alike, providing easy access to the vibrant culture and opportunities that the city has to offer.

Education is also a strong point in this locality, with a selection of reputable schools and early childhood centres nearby, catering to families with children of all ages.



Open House South Manchester



Energy Efficiency Rating		
	Current	Potential
Very energy efficient - lower running costs		
(92 plus) A	81	
(81-91) B		
(69-80) C		
(55-68) D		
(39-54) E		
(21-38) F		
(1-20) G		
Not energy efficient - higher running costs		
England & Wales		EU Directive 2002/91/EC 