

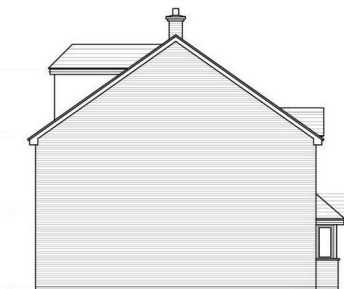
Earl Street, West Bromwich, B70 9HR

Offers Around £340,000

Council Tax Band: B



FRONT ELEVATION 1:100



SIDE ELEVATION



REAR ELEVATION



SIDE ELEVATION

Stunning New Build 3-Bedroom Townhouses – Modern Living in the Heart of West Bromwich
Earl Street, West Bromwich

An exciting opportunity to secure one of three beautifully designed, newly built terraced homes situated on the ever-popular Earl Street in West Bromwich. These contemporary properties offer spacious, flexible accommodation set over three floors — perfect for modern family living or professional couples.

On the ground floor, you’ll find a bright and welcoming reception room, a stylish fitted kitchen, and a convenient ground-floor WC. The first floor offers two well-proportioned bedrooms, a separate study room — ideal for home working or a nursery — and a sleek family bathroom.

Occupying the entire second floor is the impressive master suite, complete with its own private en-suite, creating a perfect retreat away from the main living spaces.

To the rear, each property benefits from a private garden and the added bonus of secure off-road parking, accessible via a rear entrance.

Key Features:

Brand New Build Terraced Homes

3 Bedrooms + Additional Study Room

Master Bedroom with Private En-Suite on Top Floor



Open House Edgbaston



Energy Efficiency Rating		
	Current	Potential
<i>Very energy efficient - lower running costs</i>		
(92 plus) A		
(81-91) B		
(69-80) C		
(55-68) D		
(39-54) E		
(21-38) F		
(1-20) G		
<i>Not energy efficient - higher running costs</i>		
England & Wales	EU Directive 2002/91/EC	