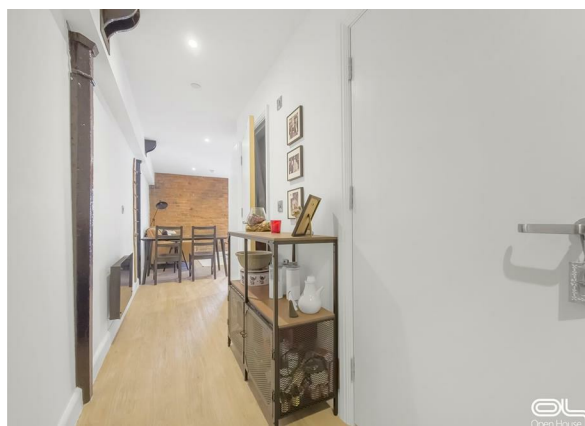
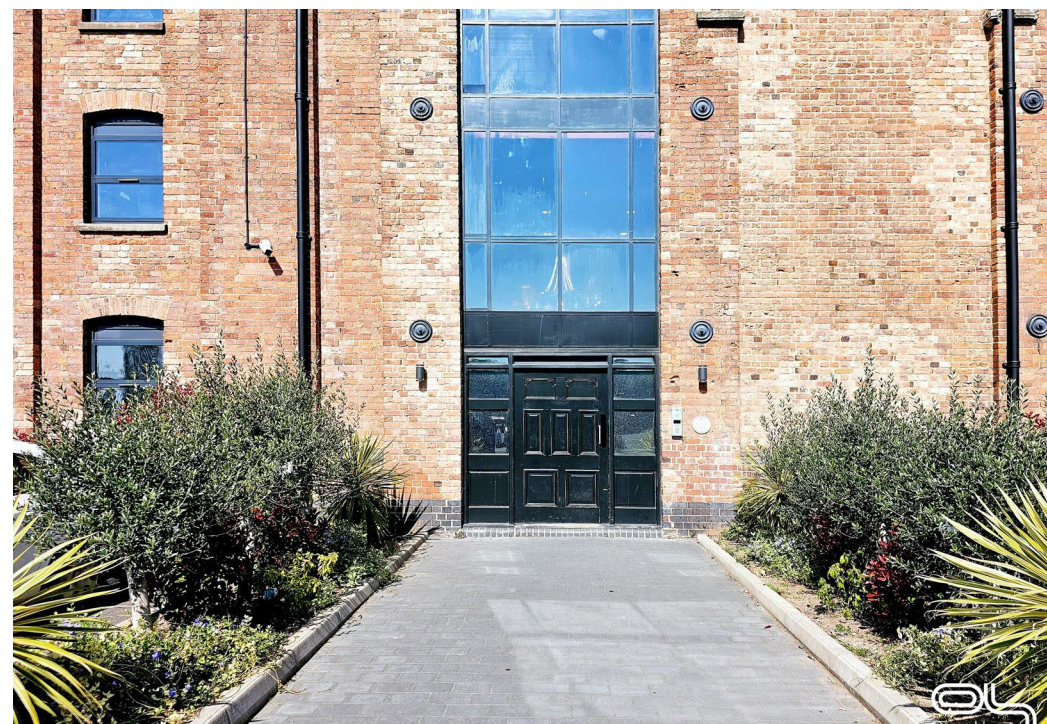


**The Maltings, Wetmore Road, Burton-On-Trent, DE14 1SE**  
**Auction Guide £90,000**  
**Council Tax Band: A**





Being Sold via Secure Sale online bidding. Terms & Conditions apply. Starting Bid £90,000.

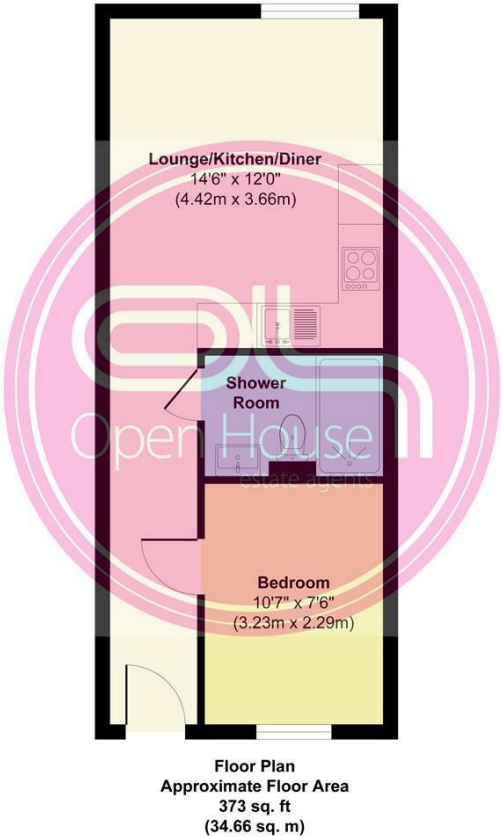
An exceptional opportunity to purchase a bespoke one-bedroom third-floor apartment situated within The Maltings—a beautifully converted Grade II listed building. Finished to a high standard throughout, this unique home combines modern living with the charm of original character features such as exposed brickwork and authentic beams.

Ideally positioned within walking distance of Burton-upon-Trent town centre, The Maltings offers a blend of historical elegance and contemporary convenience. The building is centred around a striking glass-roofed atrium and features landscaped internal garden areas on the ground floor to enhance natural light and provide a welcoming feel. A triple-height entrance foyer further amplifies the sense of space and grandeur, setting the tone as you enter this architecturally impressive development.

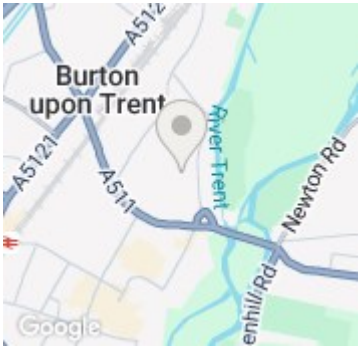
Each apartment within the building has been thoughtfully designed to maximise light, space, and functionality—making this home ideal for first-time buyers, professionals, or investors alike.



Open House Burton & Swadlincote



Approx. Gross Internal Floor Area 373 sq. ft / 34.66 sq. m.  
Illustration for identification purposes only, measurements are approximate and not to scale, unauthorised reproduction is prohibited.



Energy Efficiency Rating		
	Current	Potential
Very energy efficient - lower running costs		
(92 plus) <b>A</b>		
(81-91) <b>B</b>		
(69-80) <b>C</b>		
(55-68) <b>D</b>	66	66
(39-54) <b>E</b>		
(21-38) <b>F</b>		
(1-20) <b>G</b>		
Not energy efficient - higher running costs		
England & Wales		EU Directive 2002/91/EC