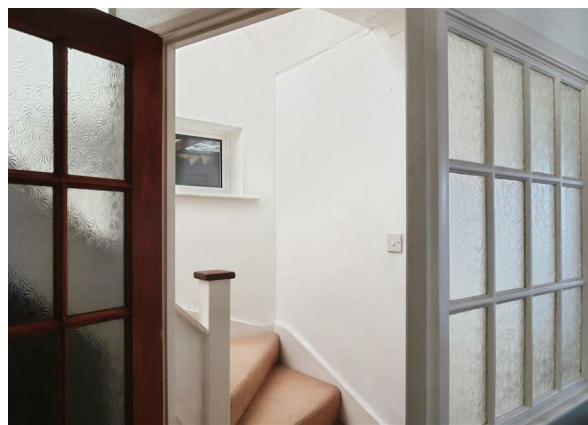
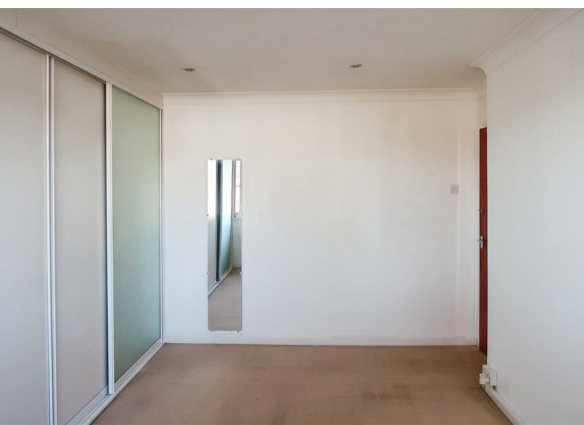


Hildenborough Crescent, Maidstone, ME16 0PJ
£1,800 Per Calendar Month



Hildenborough Crescent, Maidstone, ME16 0PJ

£1,800 Per Calendar Month
Council Tax Band: D

AVAILABLE NOW! A Charming 3-Bedroom Semi-Detached Family Home in Highly Sought-After Allington, Maidstone!

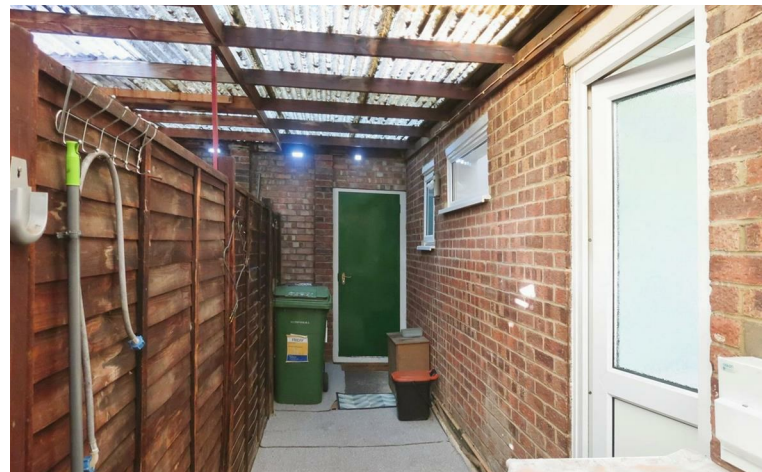
Step into this delightful property brimming with space and character. Nestled in the heart of Allington, this inviting home is perfect for families seeking comfort and convenience.

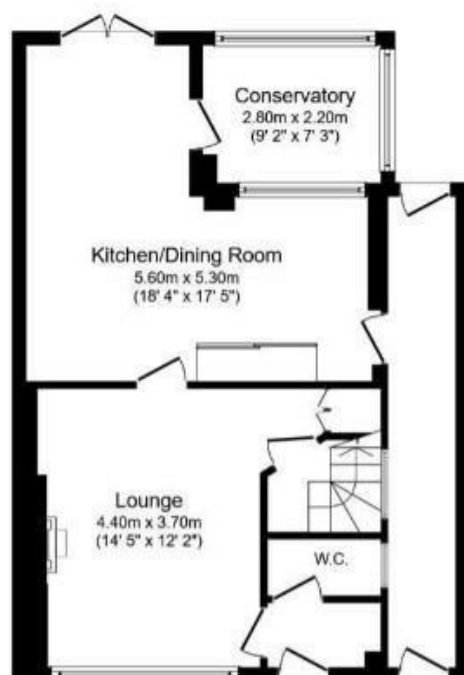
The ground floor welcomes you with an airy entrance hall featuring a convenient downstairs W/C. The spacious living room leads upstairs and serves as the heart of the home. At the rear, you'll find a bright and expansive kitchen/dining area, complete with patio doors opening onto a beautifully maintained garden, your perfect retreat for family gatherings or relaxing evenings. Adjacent to the dining space is a charming conservatory, thoughtfully added in recent years, and a lean-to providing a handy storage or utility area.

On the first floor, the property boasts two generously sized double bedrooms, including a master with built-in wardrobes. A cosy single bedroom with additional storage above the stairs completes the picture, alongside a stylish three-piece family bathroom.

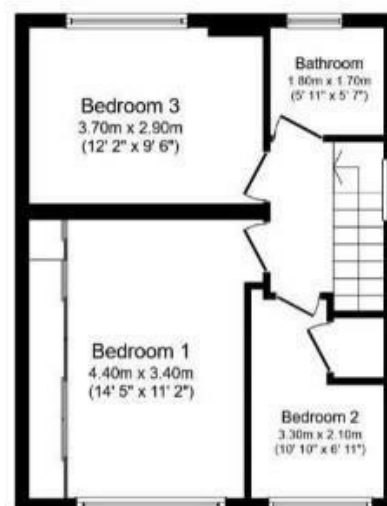
Prime Location

Positioned close to local amenities, excellent transport links, and the well-regarded Allington Primary School, this home offers unmatched convenience. A short drive takes you to Maidstone Town Centre, where you'll find a vibrant mix of shops, restaurants, and access to two mainline stations. The nearby M2 and M20 motorways also ensure effortless travel further afield.

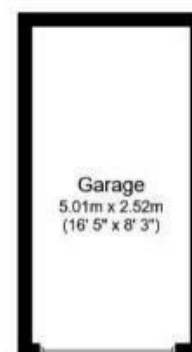




Ground Floor

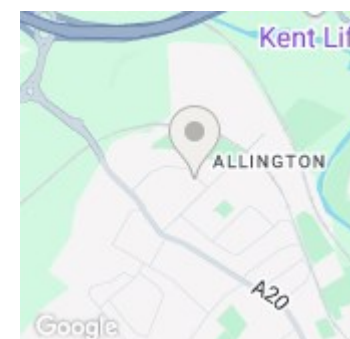


First Floor



Garage

Total floor area 119.0 sq. m. (1,281 sq. ft.) approx



Energy Efficiency Rating		
	Current	Potential
Very energy efficient - lower running costs		
(92 plus) A		
(81-91) B	81	84
(69-80) C		
(55-68) D		
(39-54) E		
(21-38) F		
(1-20) G		
Not energy efficient - higher running costs		
England & Wales		EU Directive 2002/91/EC