

Merevale Close, Beechwood, WA7 2YQ

£235,000

Council Tax Band: B



Nestled in the charming cul-de-sac of Merevale Close, Runcorn, this delightful three-bedroom home offers an ideal opportunity for first-time buyers or young families seeking a comfortable and inviting home.

Upon entering, you are welcomed into a spacious reception room that serves as a perfect gathering space for family and friends. The heart of the home is undoubtedly the kitchen diner, which is designed for both functionality and social interaction, making it an excellent spot for family meals and entertaining guests. Adjacent to the kitchen, the conservatory adds a touch of elegance and provides a bright, airy space overlooking the south facing garden, that can be enjoyed throughout the year.

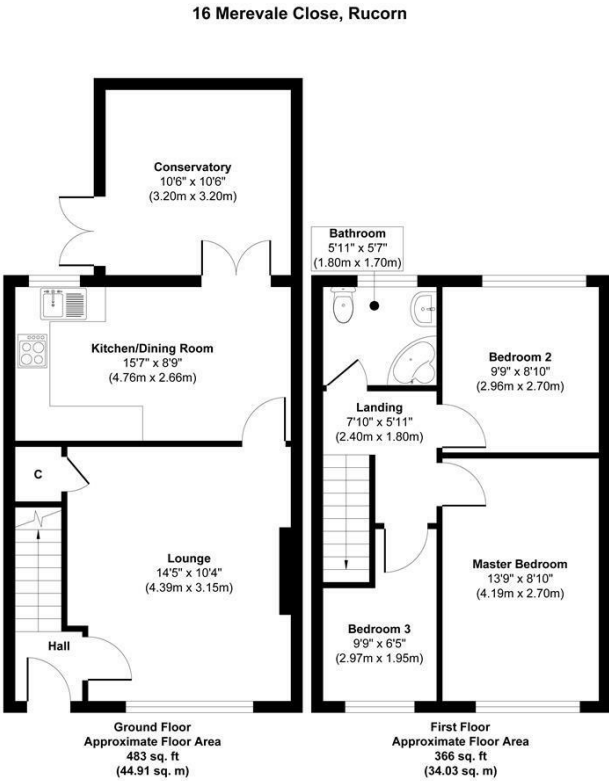
The property features three well-proportioned bedrooms, offering ample space for rest and privacy. The bathroom is conveniently located to serve all bedrooms, ensuring ease of access for the entire family.

In addition to its appealing interior, this home benefits from good transport links nearby, making commuting and travel straightforward. The surrounding area is also known for its community spirit and local amenities, further enhancing the appeal of this lovely residence.

Contact us today and don't miss out on the opportunity of making this your next home!



The Hive Sankey Street, Warrington, WA1
1XG
01925 987 085
info@real5estates.com
www.real5estates.com



Approx. Gross Internal Floor Area 849 sq. ft / 78.94 sq. m
Illustration for identification purposes only, measurements are approximate, not to scale.
Produced by Elements Property



Energy Efficiency Rating		
	Current	Potential
Very energy efficient - lower running costs		
(92 plus) A		
(81-91) B		
(69-80) C		
(55-68) D		
(39-54) E		
(21-38) F		
(1-20) G		
Not energy efficient - higher running costs		
England & Wales		EU Directive 2002/91/EC