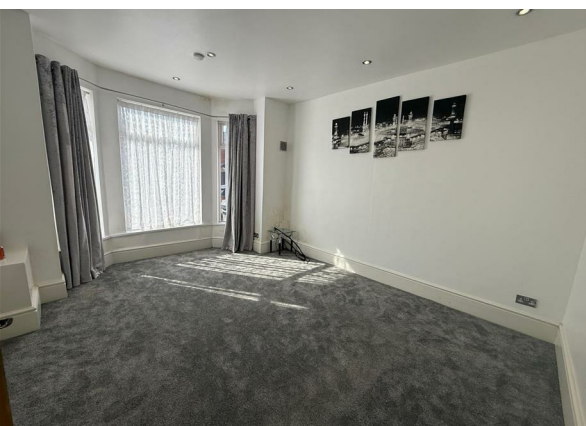


Beresford Road, Manchester, M13 0TA

£1,995 Per Month

Council Tax Band:



Nestled on the charming Beresford Road in Manchester, this delightful mid-terrace house offers a perfect blend of character and modern living. Built in 1900, the property boasts a generous living space of 1,313 square feet, making it an ideal home for families or professionals seeking comfort and convenience.

Upon entering, you are greeted by two inviting reception rooms, perfect for entertaining guests or enjoying quiet evenings with family. The layout provides a warm and welcoming atmosphere, allowing for versatile use of space. The three well-proportioned bedrooms on the first floor, offer ample room for relaxation and rest, catering to the needs of a growing family or those who desire extra space for guests or a home office.

The property features a spacious single bathroom, thoughtfully designed to meet everyday needs. The mid-terrace design ensures a sense of community while still providing privacy. The location on Beresford Road is particularly appealing, with easy access to local amenities, schools, and transport links, making it a convenient choice for daily life.

This home, with its rich history and spacious layout, presents an excellent opportunity for those looking to settle in a vibrant area of Manchester. If you are seeking a new family home, this property is sure to impress with its charm and potential.

Rent: £1,995
Deposit: £1,995
EPC: E
Council Tax Band: B

Contact us today to make this lovely property yours.

Open House Estate Agents
4 Mitre Road, Manchester M13 0NU
0161 225 6926



Open House South East Manchester



Energy Efficiency Rating		
	Current	Potential
Very energy efficient - lower running costs		
(92 plus) A	52	
(81-91) B		
(69-80) C		
(55-68) D		
(39-54) E		
(21-38) F		
(1-20) G		
Not energy efficient - higher running costs		
England & Wales		EU Directive 2002/91/EC
		