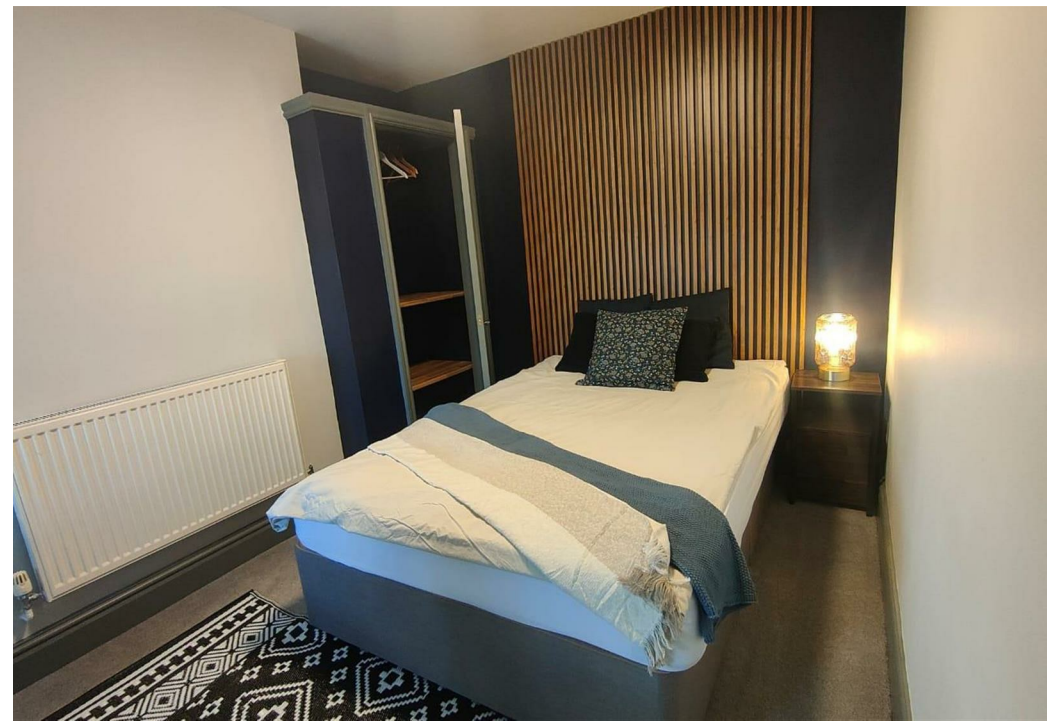
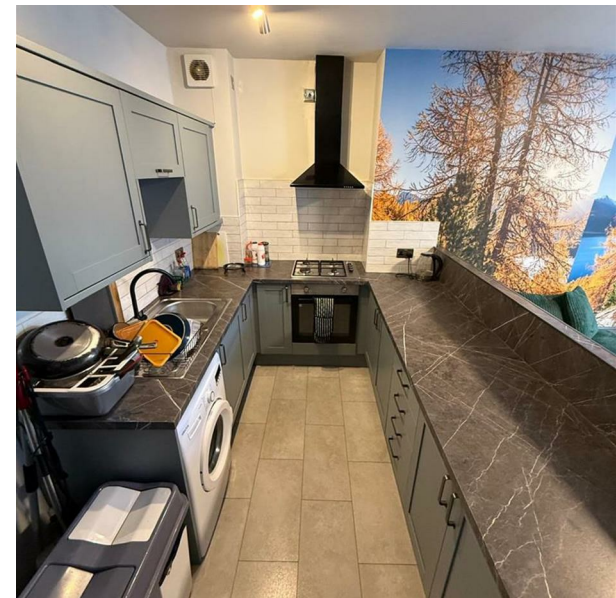


Smithdown Road, Wavertree, L15 3JL

£500 Per Month

Council Tax Band: A



Modern Double Room – All Bills Included – Smithdown Road Location

Tired of cramped, outdated rentals with hidden costs and weak WiFi? Make the switch to a better standard of living. This spacious double room in a well-maintained professional house share offers comfort, convenience, and a community atmosphere.

Perfect for younger students or working professionals, the house is designed to support a balanced lifestyle with everything you need already in place. From superfast broadband to fully equipped communal areas, you can move in stress-free and start enjoying your new home right away.

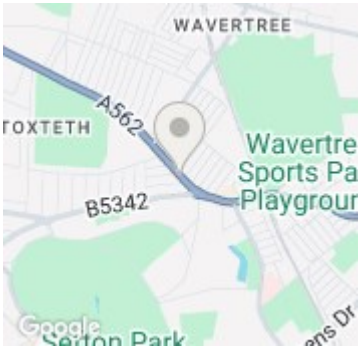
Room Features:

- Bright and spacious double room
  - Fully furnished with bed, wardrobe, and essentials
  - Blackout blinds for a restful night’s sleep
- Shared Amenities:

- Superfast WiFi – ideal for work or entertainment
  - Two modern bathrooms – no more morning queues
  - Contemporary kitchen with all appliances provided
  - Lounge area for socialising or winding down
  - Fortnightly cleaning service for shared spaces
- Location Benefits:



Open House Liverpool



Energy Efficiency Rating		
	Current	Potential
Very energy efficient - lower running costs		
(92 plus) <b>A</b>	<b>94</b>	
(81-91) <b>B</b>		
(69-80) <b>C</b>		
(55-68) <b>D</b>		
(39-54) <b>E</b>		
(21-38) <b>F</b>		
(1-20) <b>G</b>		
Not energy efficient - higher running costs		
England & Wales		EU Directive 2002/91/EC 