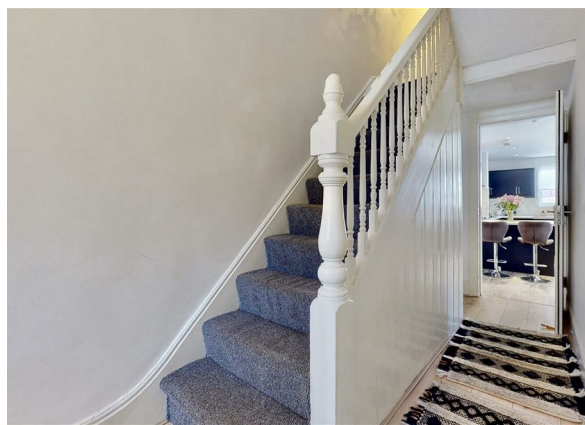
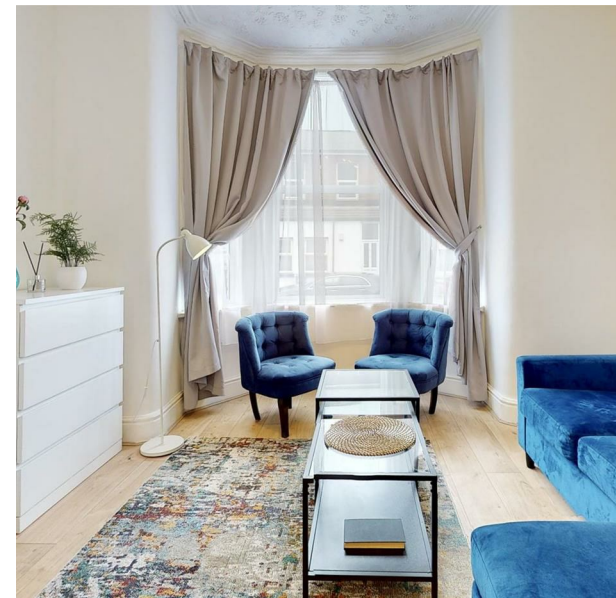
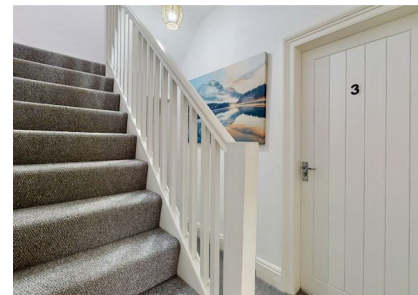


Lawrence Road, Liverpool, L15 0EQ

£498 Per Month

Council Tax Band: A



Step into a house share designed for success-driven people. Located just off Smithdown Road, this recently refurbished 8-bedroom home is built for comfort, focus, and community.

- Large fully furnished double room
- Stylish kitchen with 2 ovens, 2 fridges, washer dryer
- Two modern bathrooms
- Relax in the plush communal lounge with 55” Smart TV
- High-speed broadband (300mbps) with extenders for full coverage
- Beautiful garden with rattan furniture – perfect for relaxing after work
- Weekly cleaner for shared areas
- 24/7 heating and hot water

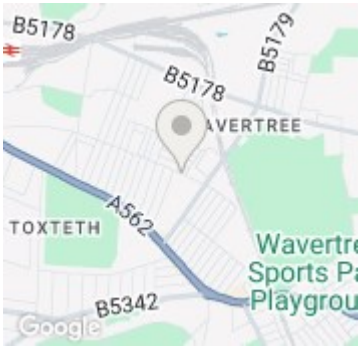
WHO LIVES HERE?

The house is currently home to young professionals and postgrad students – people who value peace, quality, and a shared sense of ambition.

- House Features:
- Spacious Shared Lounge with TV – Perfect for movie nights
 - Fully Equipped Kitchen & Dining Area – Cook & eat together
 - Two Shared Bathrooms – No long morning queues
 - All Bills Included – No hidden costs!
 - Essential Appliances – Microwave, toaster & kettle included
 - Fortnightly Cleaner – Keeps shared spaces fresh



Open House Liverpool



Energy Efficiency Rating		
	Current	Potential
Very energy efficient - lower running costs		
(92 plus) A		
(81-91) B		
(69-80) C	77	81
(55-68) D		
(39-54) E		
(21-38) F		
(1-20) G		
Not energy efficient - higher running costs		
England & Wales	EU Directive 2002/91/EC	