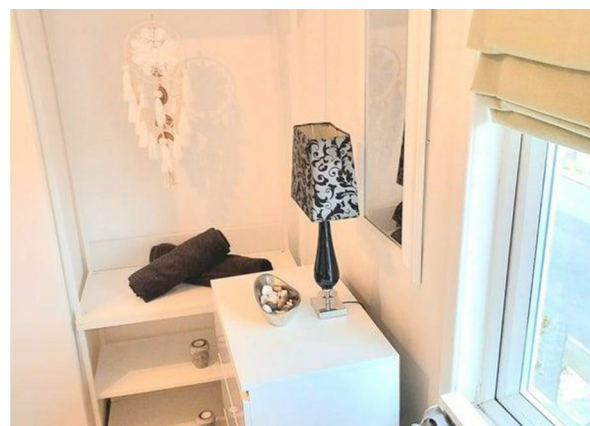
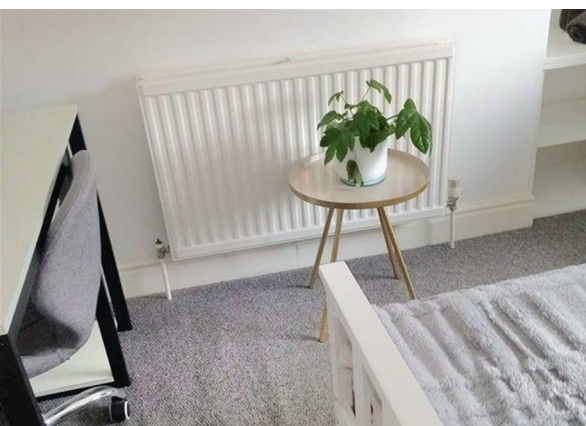
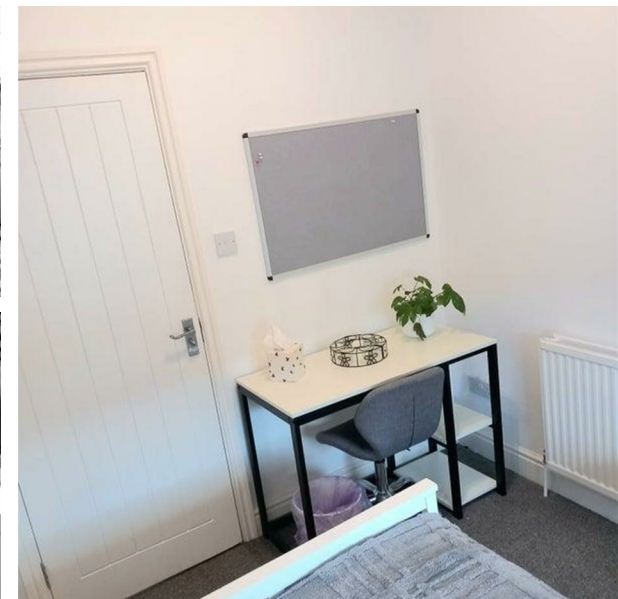
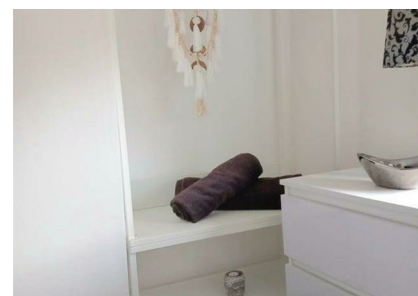


**Lawrence Road, Liverpool, L15 0EQ**

**£460 Per Month**

**Council Tax Band: A**



Lawrence Road | All Bills Included | £460 PCM

This spacious, fully furnished home on Lawrence Road offers an easy, stress-free lifestyle close to Liverpool city centre and the Knowledge Quarter. Perfect for young professionals and postgraduate students looking for a peaceful and convenient base.

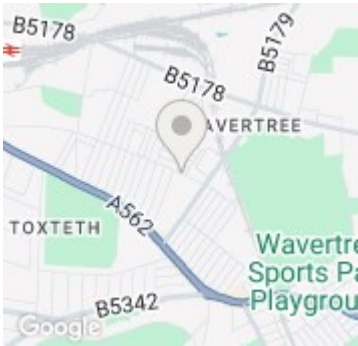
- What's Included:
- Large, bright bedroom with blackout blinds
  - Fully furnished throughout – just move in
  - Superfast 300Mb broadband – ideal for work and entertainment
  - Washer and dryer included – no extra costs
  - Two shared bathrooms with regular cleaning checks
  - Fortnightly cleaner for shared spaces
  - Front and back gardens, well-maintained for you to enjoy
  - Parking available (free on-street)

- Location Highlights:
- 5 minutes to Co-op, Polish shop, and local amenities
  - 10 minutes to Sefton Park – great for outdoor activities
  - Excellent transport links to the city centre, universities, and hospitals

All bills are included in the rent: gas, electricity, water, council tax, broadband, and TV licence.



Open House Liverpool



Energy Efficiency Rating		
	Current	Potential
Very energy efficient - lower running costs		
(92 plus) A		
(81-91) B		
(69-80) C	77	81
(55-68) D		
(39-54) E		
(21-38) F		
(1-20) G		
Not energy efficient - higher running costs		
England & Wales	EU Directive 2002/91/EC	