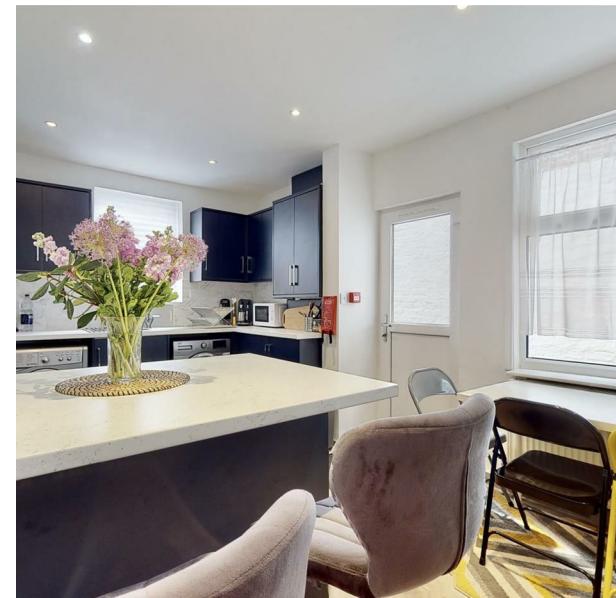


Lawrence Road, Liverpool, L15 0EQ

£498 Per Month

Council Tax Band: A





Quiet Comfort and Hassle-Free Living on Lawrence Road – Perfect for Postgrads!

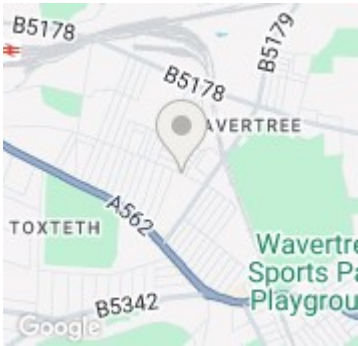
Looking for a peaceful, structured home environment with the bonus of good company? This fully furnished house on Lawrence Road offers the perfect balance — ideal for postgraduate students and young professionals who value calm, routine, and a supportive community.

- What’s on Offer:
- Spacious, stylishly furnished bedroom
  - Superfast WiFi – perfect for working from home or studying
  - Ample storage with two freezers and an extra fridge-freezer
  - Free use of washer & dryer – no extra cost
  - Blackout blinds for quality sleep
  - Essential kitchen appliances (microwave, toaster, kettle)
  - Fortnightly cleaning service for shared areas
  - Well-maintained front and back gardens
  - Parking available (free on-street)

- Prime Location:
- 15 mins to University of Liverpool & Royal Hospital
  - 5 mins to Smithdown Road, Tesco & Asda
  - Easy bus routes into the city centre
  - Quick access to Liverpool Lime Street Station



Open House Liverpool



Energy Efficiency Rating		
	Current	Potential
Very energy efficient - lower running costs		
(92 plus) A		
(81-91) B		
(69-80) C	77	81
(55-68) D		
(39-54) E		
(21-38) F		
(1-20) G		
Not energy efficient - higher running costs		
England & Wales	EU Directive 2002/91/EC	