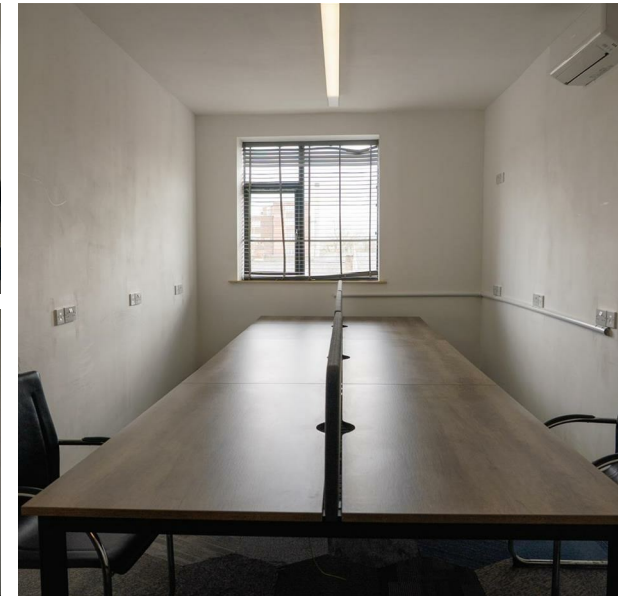
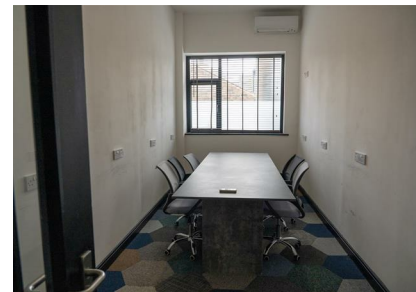


Co-Working, 27-31 Sankey Street, Warrington, Cheshire, WA1 1XG

£20

Council Tax Band:





Welcome to The Hive, an exceptional commercial property located at 27-31 Sankey Street in the heart of Warrington. This vibrant space offers a unique opportunity for businesses seeking a dynamic environment to thrive. Situated in a bustling town centre, The Hive is perfectly positioned to benefit from high foot traffic and a diverse range of local amenities.

The property boasts co-working opportunities, making it an ideal choice for freelancers, start-ups, and established companies alike. With flexible pricing options available, you can tailor your workspace to suit your specific needs, ensuring that you find the perfect fit for your business.

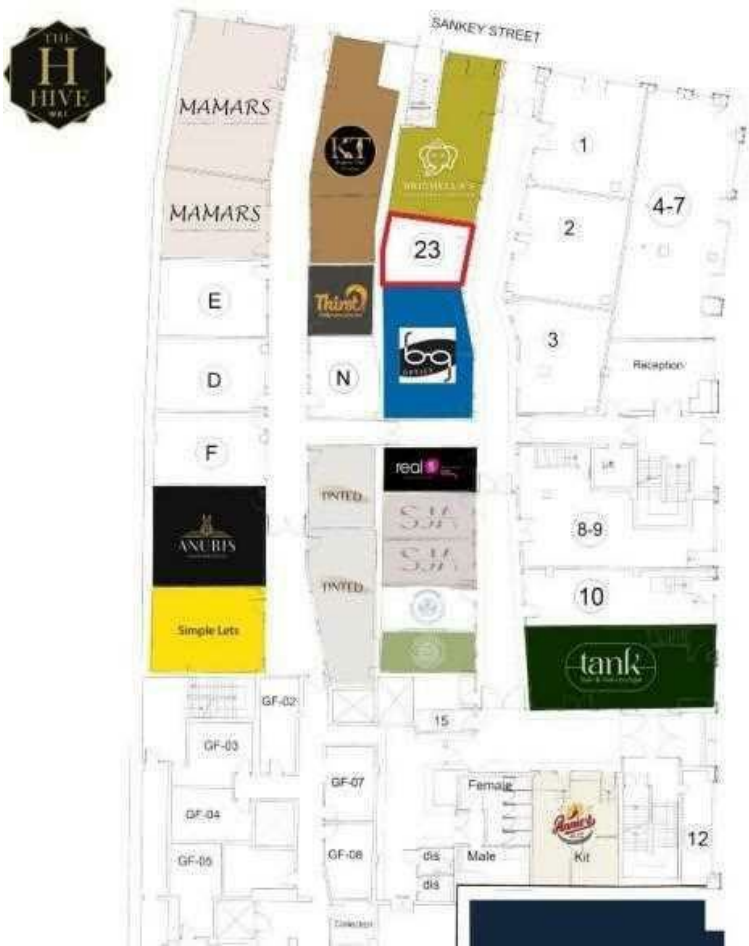
Moreover, The Hive is conveniently commutable from both Manchester and Liverpool, making it an attractive location for professionals who wish to enjoy the benefits of a thriving town while remaining connected to larger cities. This accessibility enhances the appeal of the property, providing a strategic advantage for businesses looking to expand their reach.

The Hive offers a prime commercial space in Warrington's town centre, with co-working opportunities and flexible pricing that cater to a variety of business needs. Don't miss the chance to establish your presence in this thriving location.

Contact us today to book in a viewing!



The Hive Sankey Street, Warrington, WA1  
 1XG  
 01925 987 085  
 info@real5estates.com  
 www.real5estates.com



Energy Efficiency Rating		
	Current	Potential
Very energy efficient - lower running costs		
(92 plus) <b>A</b>		
(81-91) <b>B</b>		
(69-80) <b>C</b>		
(55-68) <b>D</b>		
(39-54) <b>E</b>		
(21-38) <b>F</b>		
(1-20) <b>G</b>		
Not energy efficient - higher running costs		
<b>England &amp; Wales</b>	EU Directive 2002/91/EC	