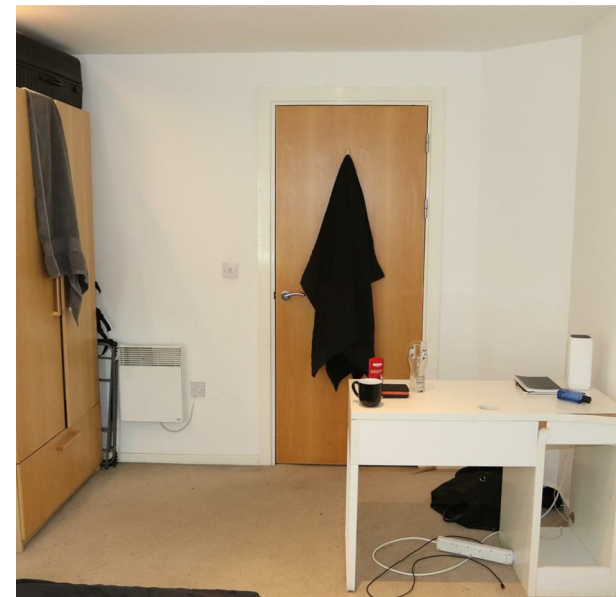


**Masshouse Plaza, City Centre, Birmingham, B5 5JE**

**Offers Around £249,950**

**Council Tax Band: D**



Nestled in the vibrant heart of Birmingham, this modern flat located in Masshouse Plaza offers a perfect blend of comfort and convenience. Spanning an impressive 775 square feet, this well-designed apartment features two spacious bedrooms, making it an ideal choice for professionals, couples, or small families seeking a stylish urban lifestyle.

Upon entering, you are welcomed into a bright reception room that serves as a versatile space for relaxation and entertaining. The contemporary design is complemented by large windows that allow natural light to flood the room, creating a warm and inviting atmosphere. The flat boasts a well-appointed bathroom, ensuring that all your needs are met with ease.

Built in 2009, this property benefits from modern construction standards and amenities, providing a comfortable living experience. The location is particularly advantageous, with easy access to local shops, restaurants, and public transport links, making it simple to explore all that Birmingham has to offer.

Whether you are looking to invest in a property or seeking a new home, this flat in Masshouse Plaza presents an excellent opportunity to enjoy city living at its finest. Don't miss the chance to make this delightful apartment your own. Property is currently Let on a short term (12 Months) tenancy.  
Monthly Rental: £1,300.00 per Month, Current tenancy expire 26th July 2025  
The property will not be left empty we will have new tenants at the end of this tenancy agreement. Any buyer will decide if they wish to extend or give notice to the tenants at the end of their tenancy.



Open House West Midlands



Energy Efficiency Rating		
	Current	Potential
Very energy efficient - lower running costs		
(92 plus) A		
(81-91) B		
(69-80) C	72	83
(55-68) D		
(39-54) E		
(21-38) F		
(1-20) G		
Not energy efficient - higher running costs		
England & Wales	EU Directive 2002/91/EC	