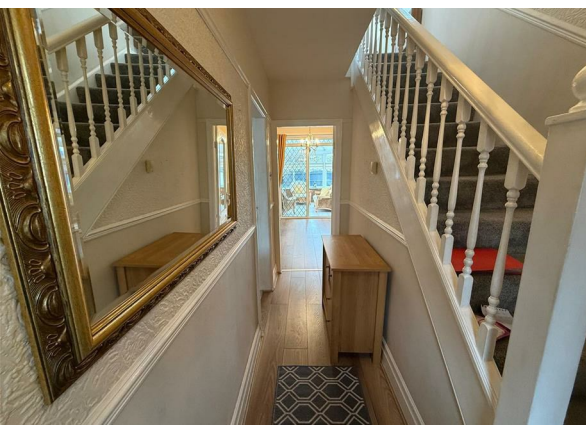


Ashbrook Street, Openshaw, M11 1GS

£1,595 Per Month

Council Tax Band: B



Nestled in the vibrant area of Openshaw, this charming fully-furnished end terrace house on Ashbrook Street offers a delightful blend of comfort and convenience. Spanning an impressive 1,087 square feet, this property is perfect for families or individuals seeking a spacious home with a welcoming atmosphere.

As you step inside, you will be greeted by a well-designed layout that maximizes space and natural light. The living areas are both inviting and functional, providing ample room for relaxation and entertaining. The kitchen is fully equipped with modern amenities, making it a joy to prepare meals and gather with loved ones.

The property boasts several well-proportioned bedrooms, ensuring that everyone has their own private retreat. The bathroom is tastefully appointed, offering a serene space to unwind after a long day.

Outside, the end terrace position provides a sense of privacy, with a manageable garden area that is perfect for outdoor activities or simply enjoying the fresh air. The property also offers a garage that provides extra storage for the tenants. The location is well-connected, with local amenities, schools, and parks within easy reach, making it an ideal choice for those who value community living.

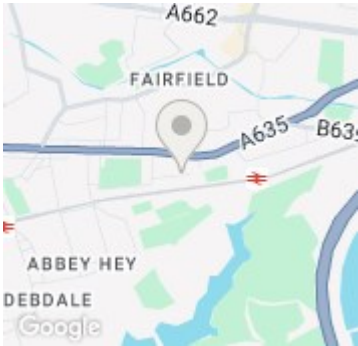
Rent £1595 per month
Deposit £1595
EPC Rating "E"
Council Tax Band "B"

Contact us today to make this beautiful property your home.

Open House Estate Agents



Open House South East Manchester



Energy Efficiency Rating		
	Current	Potential
Very energy efficient - lower running costs		
(92 plus) A		
(81-91) B		
(69-80) C		
(55-68) D		
(39-54) E	45	
(21-38) F		
(1-20) G		
Not energy efficient - higher running costs		
England & Wales	EU Directive 2002/91/EC	