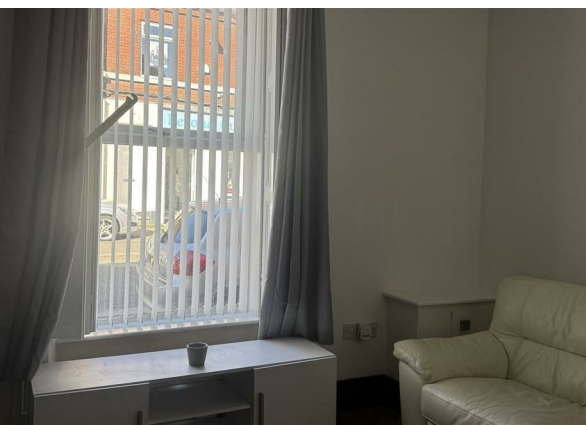


Suez Street, Bewsey And Whitecross, WA1 1EG

£700 Per Month

Council Tax Band: A



Nestled in the Convenient Town Centre of Warrington, this delightful one-bedroom Flat on Suez Street offers a perfect blend of modern living and comfort. This small yet inviting property is ideal for individuals or couples seeking a cosy home.

Upon entering, you are greeted by an open-plan living space that maximises the use of light and space, creating a warm and welcoming atmosphere. The modern kitchen is thoughtfully designed, featuring contemporary fittings that make cooking a pleasure. This layout not only enhances the functionality of the home but also provides a great space for entertaining guests or enjoying quiet evenings in.

The bedroom is well-proportioned, offering a peaceful retreat at the end of the day. The bathroom is conveniently located and equipped with modern amenities, ensuring comfort and convenience for daily routines.



The Hive Sankey Street, Warrington, WA1
1XG
01925 987 085
info@real5estates.com
www.real5estates.com



Energy Efficiency Rating		
	Current	Potential
Very energy efficient - lower running costs		
(92 plus) A		
(81-91) B		
(69-80) C		
(55-68) D	60	
(39-54) E		
(21-38) F		
(1-20) G		
Not energy efficient - higher running costs		
England & Wales	EU Directive 2002/91/EC	