

Henley Grove, Church Gresley, Swadlincote, DE11 9TS

£285,000

Council Tax Band: D

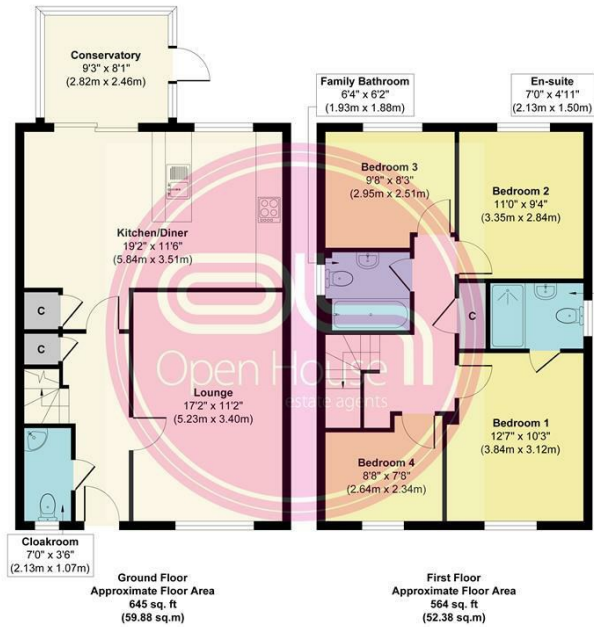


Welcome to this immaculately presented four-bedroom detached family home, offered with no chain, situated in a sought-after estate within Church Gresley, Swadlincote. This modern property offers a spacious and stylish living environment, ideal for families looking for a well-connected yet peaceful location. With a bright and airy conservatory, generous kitchen/diner, and a beautifully landscaped low-maintenance rear garden, this home is ready to move into and enjoy.



Open House Burton & Swadlincote

Henley Grove



Approx. Gross Internal Floor Area 1,209 sq. ft / 112.26 sq. m
Illustration for identification purposes only, measurements are approximate and not to scale, unauthorised reproduction is prohibited.



Energy Efficiency Rating		
	Current	Potential
Very energy efficient - lower running costs		
(92 plus) A		89
(81-91) B	79	
(69-80) C		
(55-68) D		
(39-54) E		
(21-38) F		
(1-20) G		
Not energy efficient - higher running costs		
England & Wales	EU Directive 2002/91/EC	