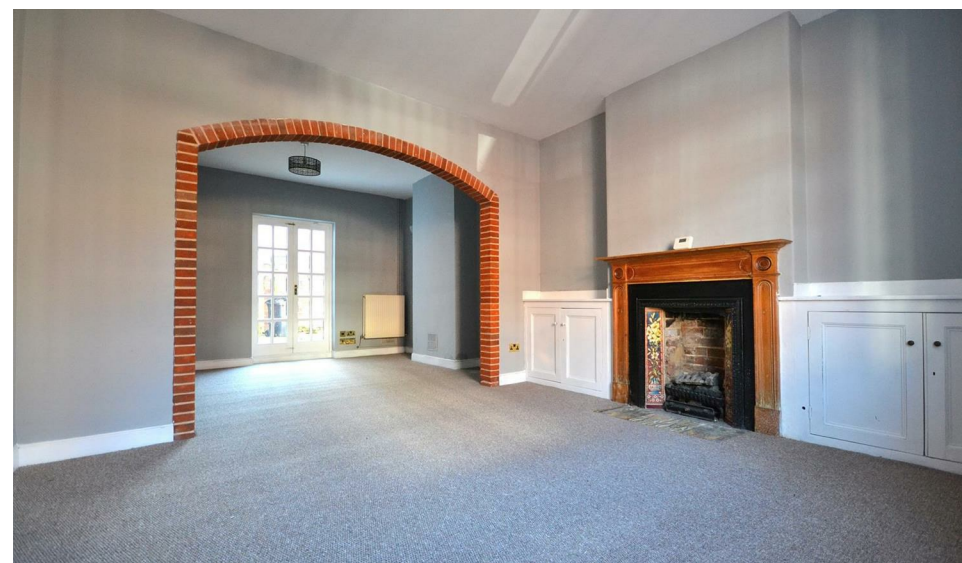
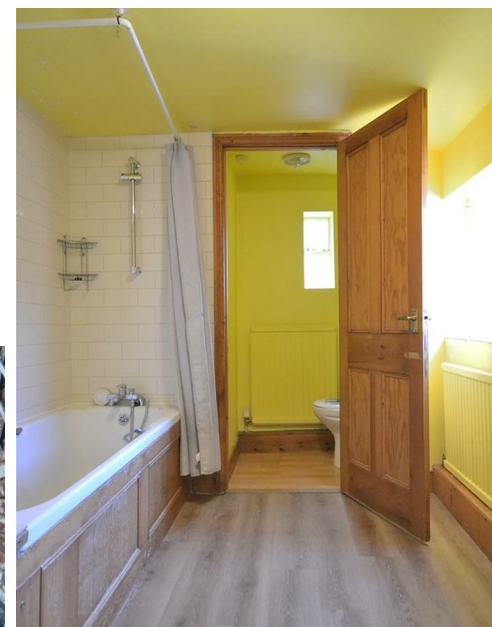


North Everard Street, King's Lynn, PE30 5HQ

£147,000

Council Tax Band: A

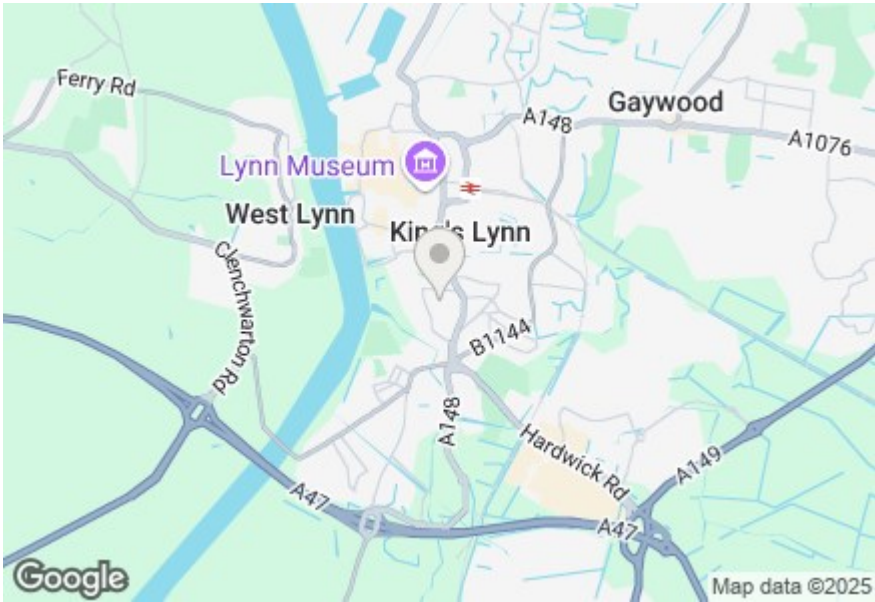
OL
Open House
estate agents



Nestled on North Everard Street in the charming town of King's Lynn, this spacious mid-terrace house offers impressive 926 square feet home ideal for first-time buyers, small families, or those looking to downsize as well as investors looking to expand their portfolio.



Open House King's Lynn
sales & Lettings
T: 01553675042
E: kingslynn@localagent.co.uk
www.openhousekingslynn.co.uk



Energy Efficiency Rating		
	Current	Potential
Very energy efficient - lower running costs		100
(92 plus) A		
(81-91) B		
(69-80) C		
(55-68) D	56	
(39-54) E		
(21-38) F		
(1-20) G		
Not energy efficient - higher running costs		
England & Wales	EU Directive 2002/91/EC	