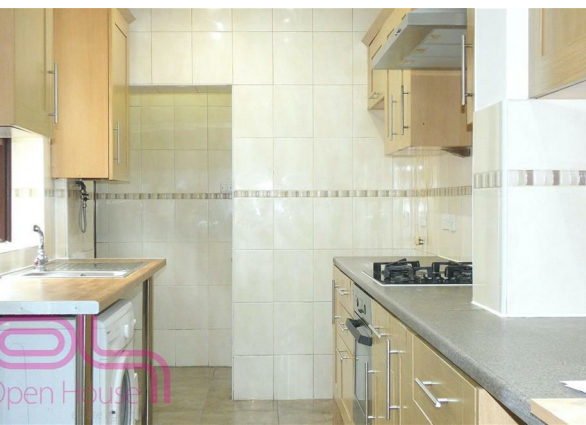


Hanworth Road, Hounslow, TW4 5LE

£2,250

Council Tax Band:



A three / four bedroom mid-terrace house for rental, situated in a popular residential location close to local amenities and excellent transport links.

The property comprises of entrance hall, reception room, dining area with fitted kitchen and a three piece family bathroom. Upstairs there are three / four bedrooms consisting of two double bedrooms, a single bedroom, a multi purpose room which can be used as a study/office or potential fourth bedroom and a family shower room. Externally there is a rear garden & off street parking. Additional benefits include Gas central heating & double glazed windows. Offered on a part furnished basis.

Local amenities include popular schools, a Tesco express, convenience stores, cafes & restaurants . Commuters will benefit from convenient transport links there are a number of bus stops and connections close by, hounslow british rail station & hounslow High street are also approximately 0.7 miles away.

EPC: rating D
Council Tax Band E: (Approx £2,433 PA)
Tenancy Deposit 5 weeks: (approx £2596 Based on a rental of £2250PCM)



Open House London

