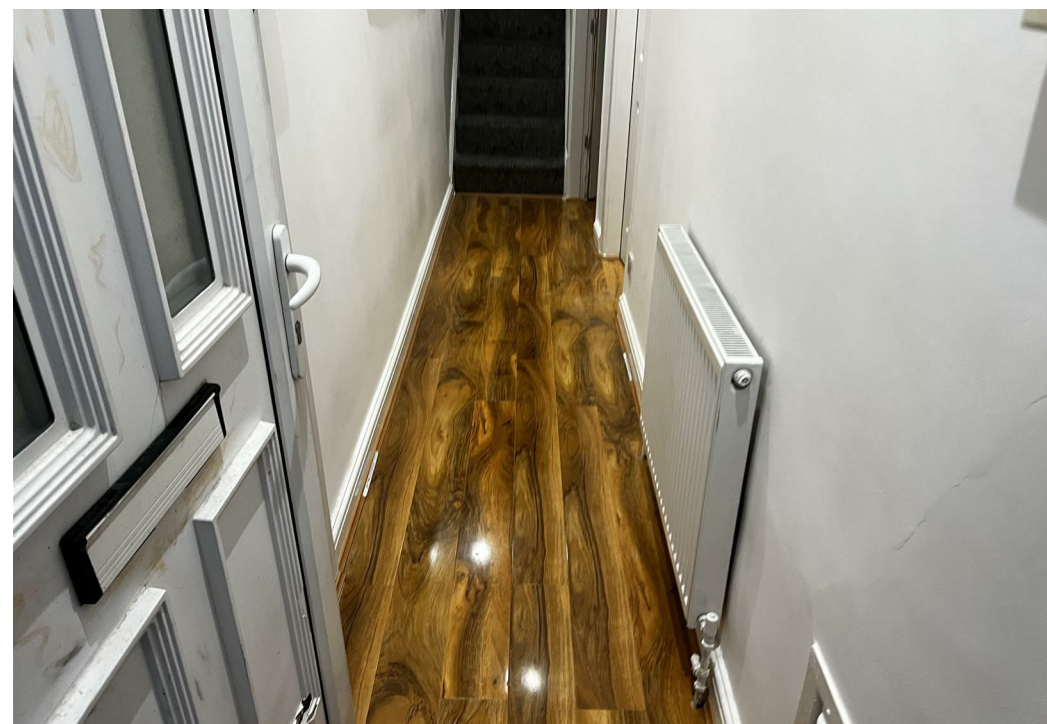
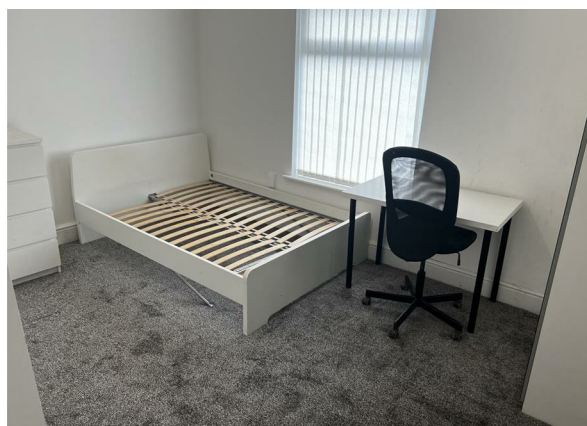
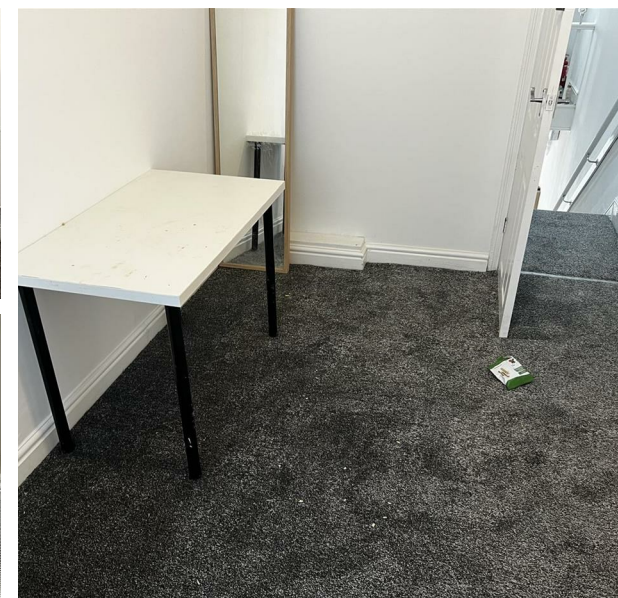
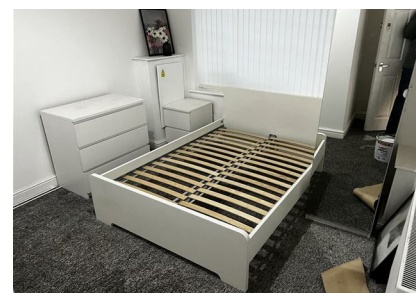
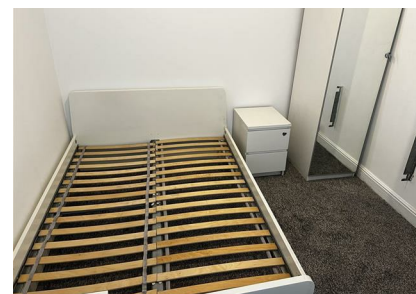


**Worsley Road, Eccles, M30 8HQ**  
**£625 Per Calendar Month**  
**Council Tax Band:**





**\*\*\*ROOM SHARE IN A 4-BEDROOM HOUSE\*\*\*FULLY FURNISHED\*\*\*RECENTLY RENOVATED\*\*\*TWO EN-SUITE\*\*\*VERY AFFORDABLE\*\*\***

We are delighted to present this lovely, newly renovated property to the rental market, located in a very popular area.

This room is part of a Four-Bedroom House in Multiple Occupation (HMO), making it suitable for those looking for a very cost-effective and affordable accommodation as the price includes all bills. All rooms come fully furnished with bed, mattress, reading table, wardrobe etc.

The property is located in a very sought-after location with proximity to local amenities and transport links.

Full Description – There are 4 bedrooms house share, 2 En-suite bedrooms, and two other rooms using the main bathroom, all rooms are double bedrooms. On the ground floor is a spacious living room, and a modern kitchen. On the first floor are 3 bedrooms and the main bathroom. Externally, there is a huge low-maintenance garden to the back.

Close to the beautiful and historic Worsley Canal, local restaurants, and bars.

Viewing is highly recommended!



**Open House North West Manchester**



Energy Efficiency Rating		
	Current	Potential
Very energy efficient - lower running costs		
(92 plus) <b>A</b>		
(81-91) <b>B</b>		
(69-80) <b>C</b>	70	
(55-68) <b>D</b>		
(39-54) <b>E</b>		
(21-38) <b>F</b>		
(1-20) <b>G</b>		
Not energy efficient - higher running costs		
<b>England &amp; Wales</b>	EU Directive 2002/91/EC	