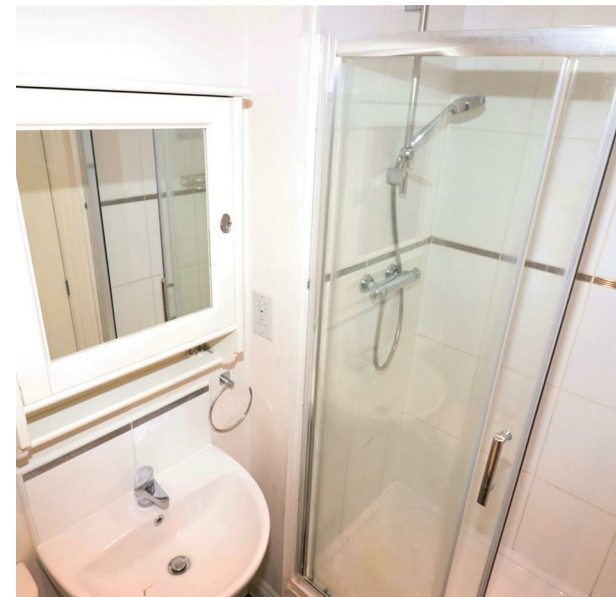


Olvega Drive, Buntingford, SG9 9FJ

Guide Price £285,000

Council Tax Band: C



Nestled in a sought-after location, this delightful two-bedroom cluster house is perfect for first-time buyers or savvy investors. Offering a bright and airy open-plan living space, the property seamlessly combines comfort and functionality. The well-appointed kitchen features integrated appliances, making everyday life effortless. A cloakroom on the ground floor adds to the convenience.

Upstairs, the master bedroom benefits from built-in wardrobes, while the second bedroom provides versatility as a home office or guest room. The contemporary shower room features a sleek double-width walk-in shower. The property also offers ample storage, including a loft with ladder access.

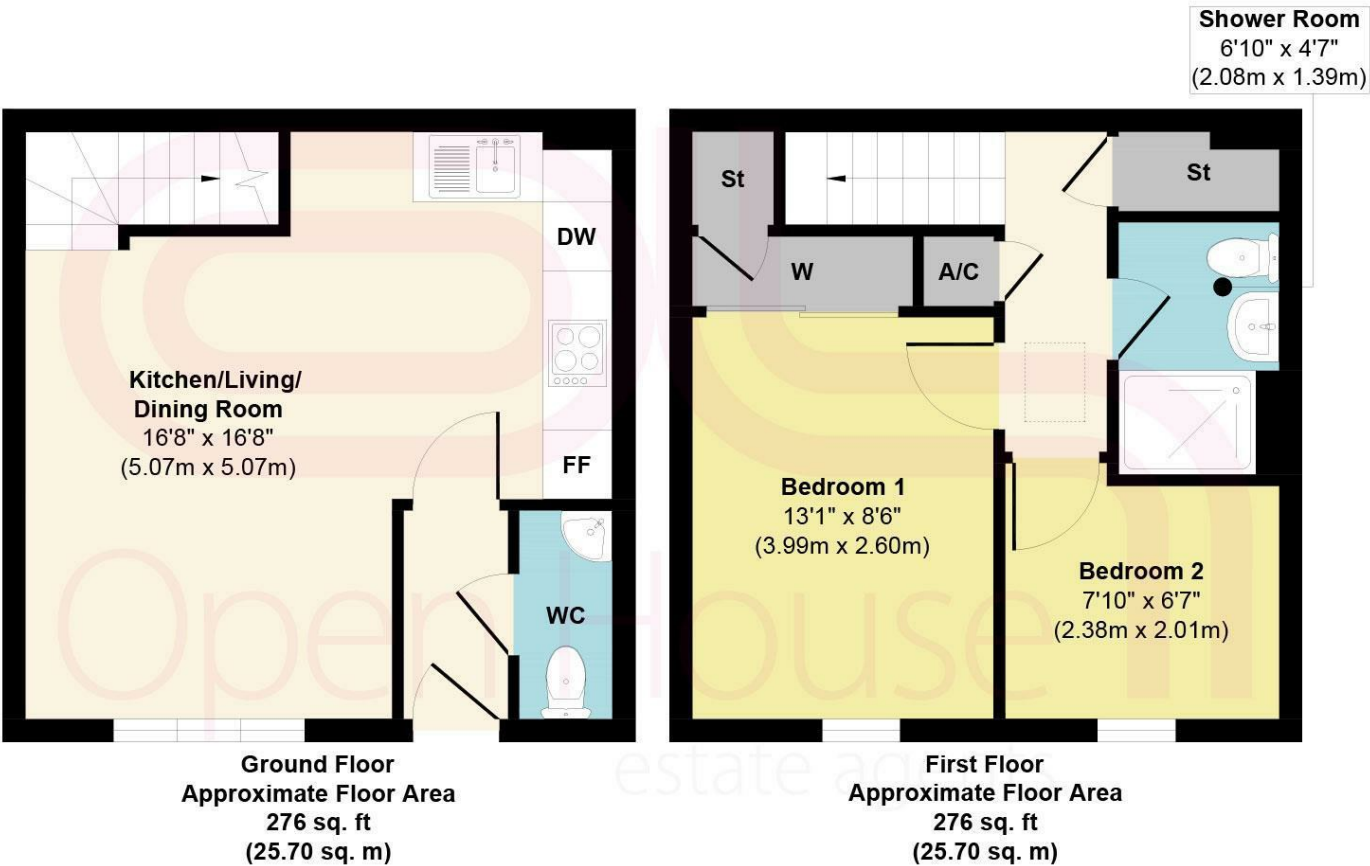
Additional Information:

- Tenure: Freehold
- Council Tax Band: C
- Annual service charge: £277.15 (paid up until December 2024)

This charming home offers a fantastic opportunity for both homeowners and investors alike. Contact us today to arrange a viewing!



Open House Cambridgeshire



Approx. Gross Internal Floor Area 552 sq. ft / 51.40 sq. m
Illustration for identification purposes only, measurements are approximate, not to scale.



Energy Efficiency Rating		
	Current	Potential
Very energy efficient - lower running costs		
(92 plus) A		93
(81-91) B	78	
(69-80) C		
(55-68) D		
(39-54) E		
(21-38) F		
(1-20) G		
Not energy efficient - higher running costs		
England & Wales	EU Directive 2002/91/EC	