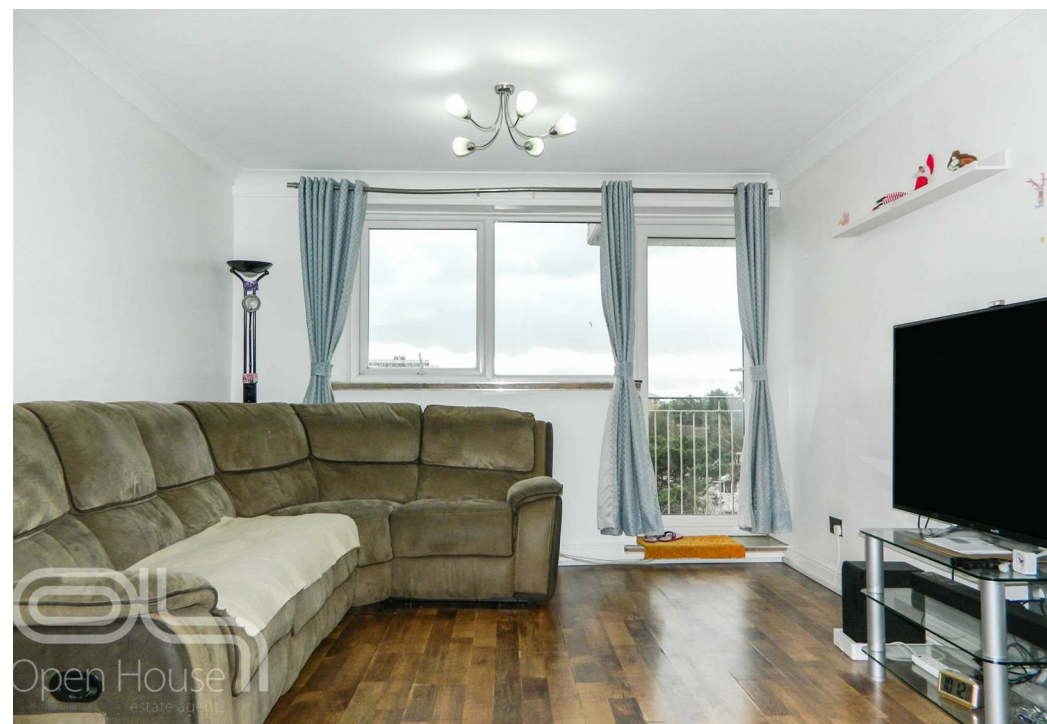
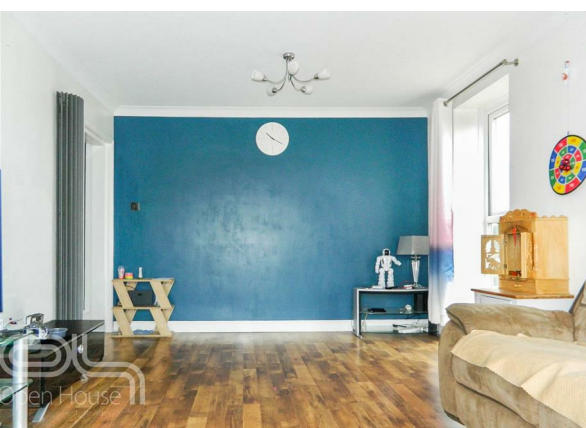
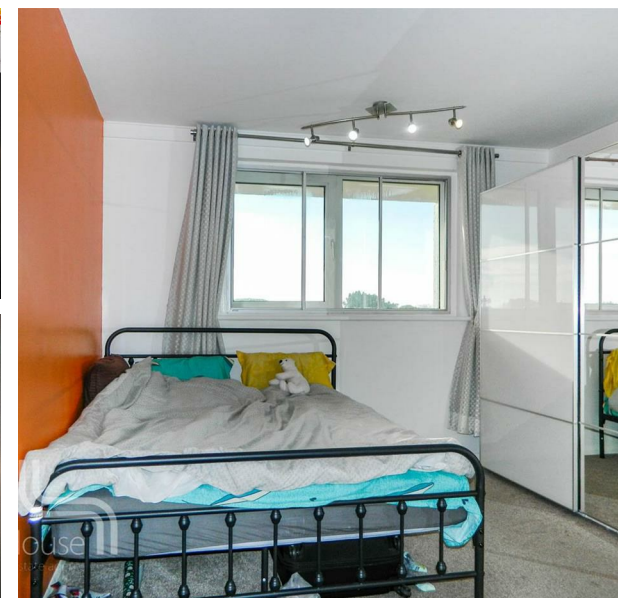


Flat 50, Christchurch Road, Bournemouth, BH1 3RB

£240,000

Council Tax Band: C



Nestled on Christchurch Road in the vibrant coastal town of Bournemouth, this delightful sixth-floor apartment at Bourne Pines, offers a perfect blend of comfort and convenience. The property features two well-proportioned bedrooms, making it an ideal choice for couples, small families, or those seeking a serene retreat by the sea.

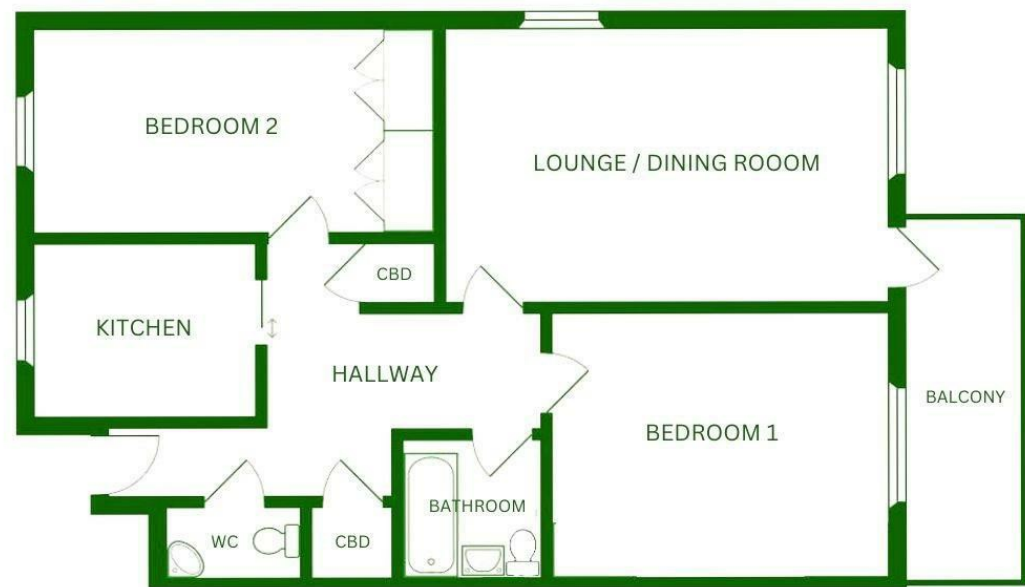
Upon entering, you are welcomed into a spacious reception room that provides a warm and inviting atmosphere, perfect for relaxation or entertaining guests. The Modern fitted kitchen is a standout feature, equipped with modern appliances and ample storage, ensuring that culinary enthusiasts will feel right at home. The apartment also benefits from recently updated gas-fired central heating, providing warmth and comfort throughout the year.

One of the highlights of this property is the south-facing balcony, where you can bask in the sun and enjoy the fresh sea breeze. The location is truly enviable, with a short walk leading you to the beautiful beach and the bustling town centre, where you can explore a variety of shops, cafes, and restaurants.

Additionally, residents can take advantage of the communal gardens located at both the front and rear of the building, offering a peaceful outdoor space to unwind and enjoy the surroundings. This flat presents an excellent opportunity for those looking to embrace a coastal lifestyle in a sought-after area of Bournemouth. Don't miss the chance to make this charming property your new home.



Open House Bournemouth



TOTAL FLOOR AREA : 72 sq. m. (775 sq. ft.) APPROX
Not Drawn to Scale for Illustration Purposes



Energy Efficiency Rating		
	Current	Potential
Very energy efficient - lower running costs		
(92 plus) A		81
(81-91) B	73	
(69-80) C		
(55-68) D		
(39-54) E		
(21-38) F		
(1-20) G		
Not energy efficient - higher running costs		
England & Wales	EU Directive 2002/91/EC	