

Blandamour Way, Bristol, BS10 6WE

£220,000

Council Tax Band: A



Welcome to this charming flat located on Blandamour Way, Southmead. This delightful property offers a perfect blend of comfort and convenience, making it an ideal choice for individuals or small families seeking a modern living space.

Upon entering, you will find a spacious reception room that serves as the heart of the home, providing a warm and inviting atmosphere for relaxation and entertaining. The flat boasts two well-proportioned bedrooms, each designed to offer a peaceful retreat at the end of the day.

The property is thoughtfully designed to maximise space and light, creating a welcoming environment throughout. The modern kitchen is equipped to meet all your culinary needs, making it easy to prepare meals and enjoy dining at home.

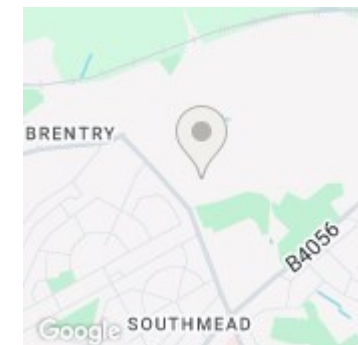
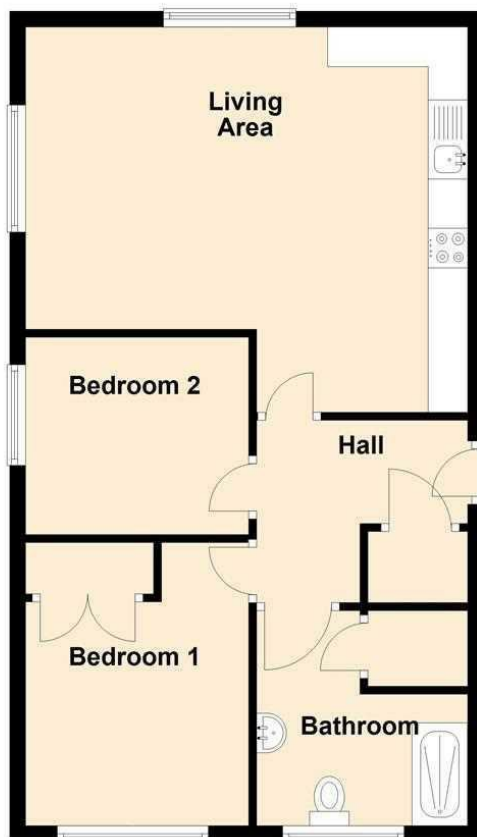
Additionally, this flat comes with the convenience of parking for one vehicle, a valuable feature in this bustling area. The location itself is a significant advantage, with local amenities, parks, and transport links just a stone's throw away, ensuring that everything you need is within easy reach.

In summary, this flat on Blandamour Way presents an excellent opportunity for those looking for a stylish and practical living space in Southmead. With its appealing layout, modern features, and prime location, it is sure to attract interest. Do not miss the chance to make this lovely property your new home.



Open House Bristol North East

Ground Floor



Energy Efficiency Rating		
	Current	Potential
Very energy efficient - lower running costs		
(92 plus) <b>A</b>		
(81-91) <b>B</b>	77	77
(69-80) <b>C</b>		
(55-68) <b>D</b>		
(39-54) <b>E</b>		
(21-38) <b>F</b>		
(1-20) <b>G</b>		
Not energy efficient - higher running costs		
<b>England &amp; Wales</b>	EU Directive 2002/91/EC	