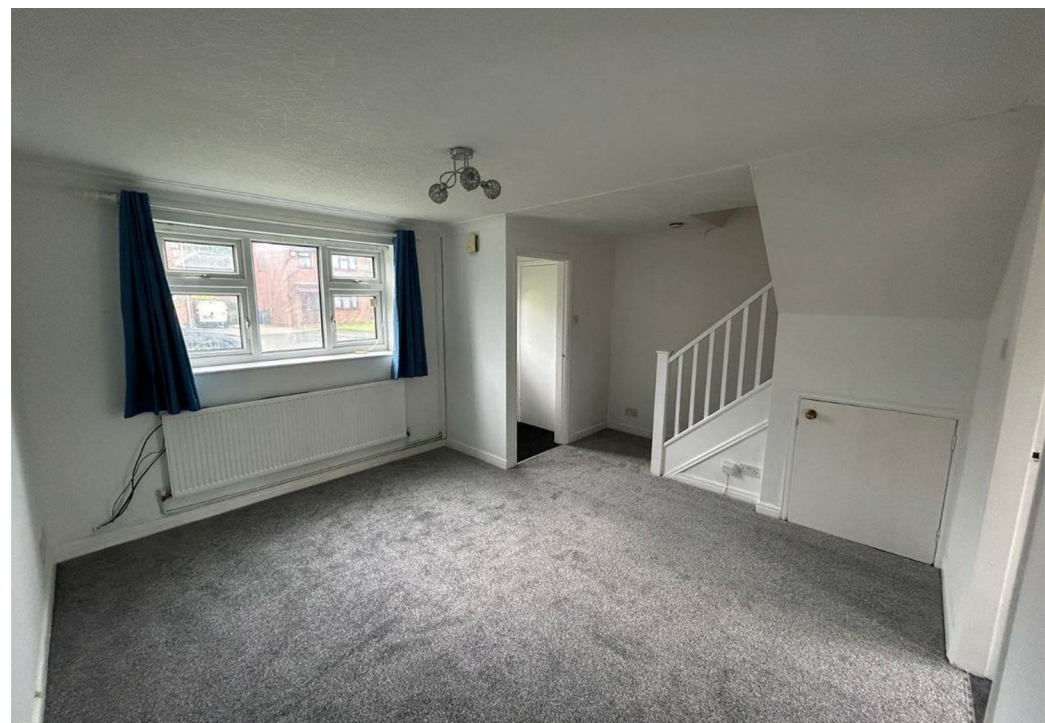
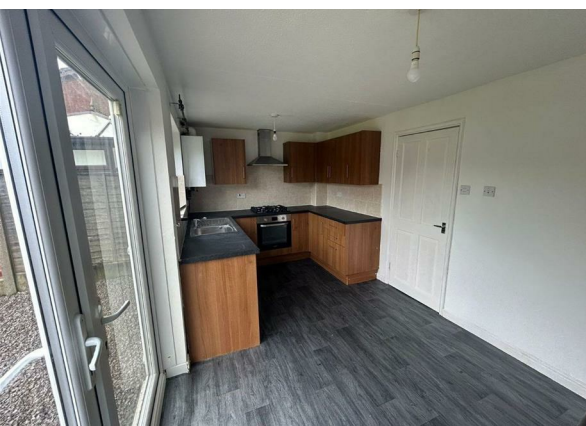
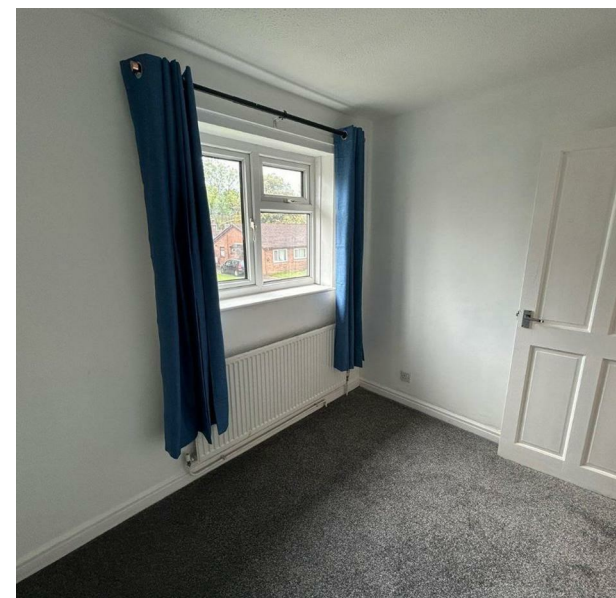


Oadby Close, Manchester, M12 4WJ

Asking Price £265,000

Council Tax Band: B



Welcome to this charming property located on Oadby Close in the vibrant city of Manchester. This delightful house boasts a spacious 786 sq ft of living space, perfect for a growing family or those who love to entertain.

As you step inside, you are greeted by a cosy reception room, ideal for relaxing after a long day or hosting guests. With three inviting bedrooms, there is plenty of space for everyone to unwind and make themselves at home.

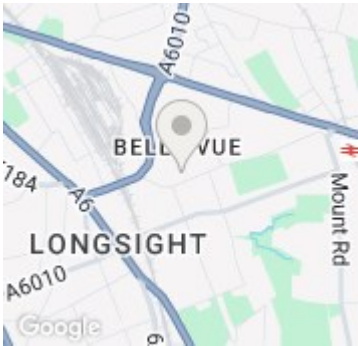
Built in 1980, this property exudes character and charm while offering modern conveniences for comfortable living. The well-maintained interior is ready for you to add your personal touch and make it your own.

Conveniently, there is parking available for two vehicles, ensuring you never have to worry about finding a spot after a busy day out and about in Manchester.

Don't miss the opportunity to make this house your home in the heart of Manchester. Book a viewing today and envision the possibilities that await you at this lovely property on Oadby Close.
Contact Open House Estate Agents
01612256926



Open House South East Manchester



Energy Efficiency Rating		
	Current	Potential
Very energy efficient - lower running costs		
(92 plus) A		
(81-91) B	82	
(69-80) C		
(55-68) D		
(39-54) E		
(21-38) F		
(1-20) G		
Not energy efficient - higher running costs		
England & Wales	EU Directive 2002/91/EC	