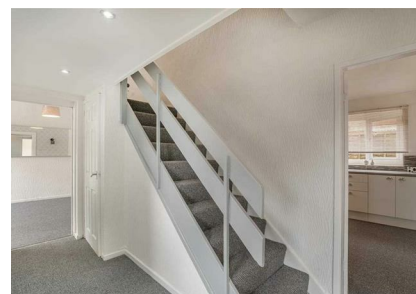
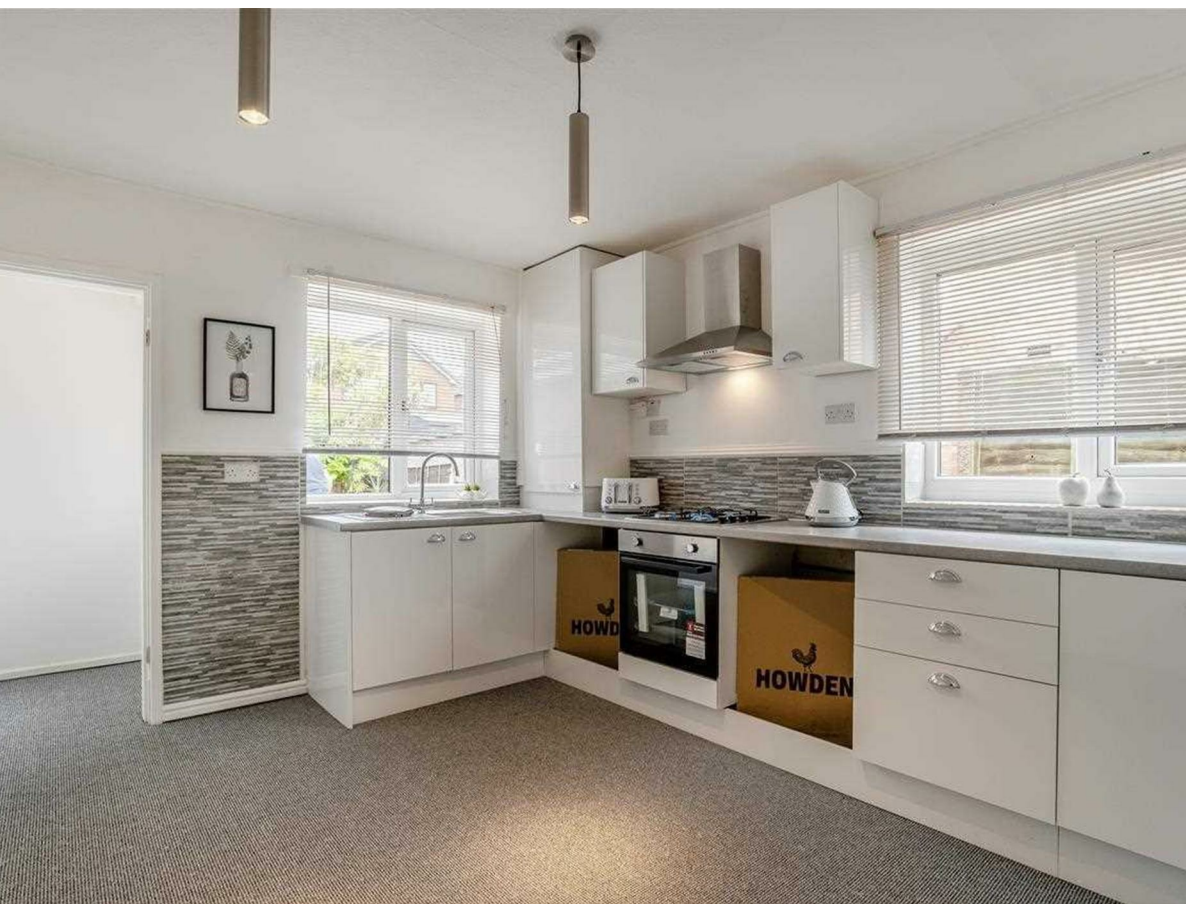


Bridlemere Court, Warrington, Cheshire, WA1 3DY

Offers Over £270,000

Council Tax Band: D



NO CHAIN* READY TO MOVE IN STRAIGHT AWAY* MOTIVATED VENDOR

Introducing Bridlemere Court! This property combines spacious living with modern convenience. This home offers two generous reception rooms, which could potentially serve as a third bedroom, along with ample storage and brand new carpets fitted throughout. The newly fitted kitchen has been finished to a high standard and looks out onto the rear garden. Not only does the interior offer ample storage, but this property sits on a huge plot with gardens all around!

With its proximity to local schools, shops, and the town centre, this property is perfect for a growing family seeking both comfort and accessibility, or First Time Buyers looking to make their first move on the property ladder! Don't miss out on the opportunity to experience the charm of Bridlemere Court - schedule your viewing today

COUNCIL TAX BANDING D



Real 5 Estates, powered by Open House



Energy Efficiency Rating		
	Current	Potential
Very energy efficient - lower running costs		
(92 plus) A		84
(81-91) B		
(69-80) C	69	
(55-68) D		
(39-54) E		
(21-38) F		
(1-20) G		
Not energy efficient - higher running costs		
England & Wales		EU Directive 2002/91/EC 