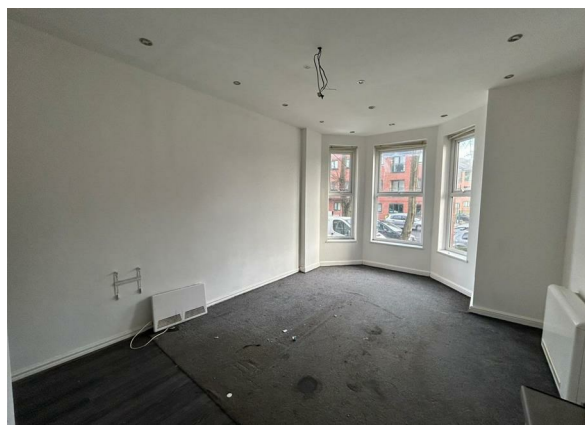
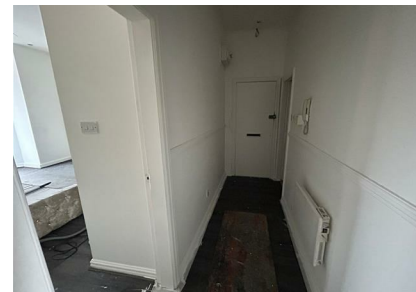
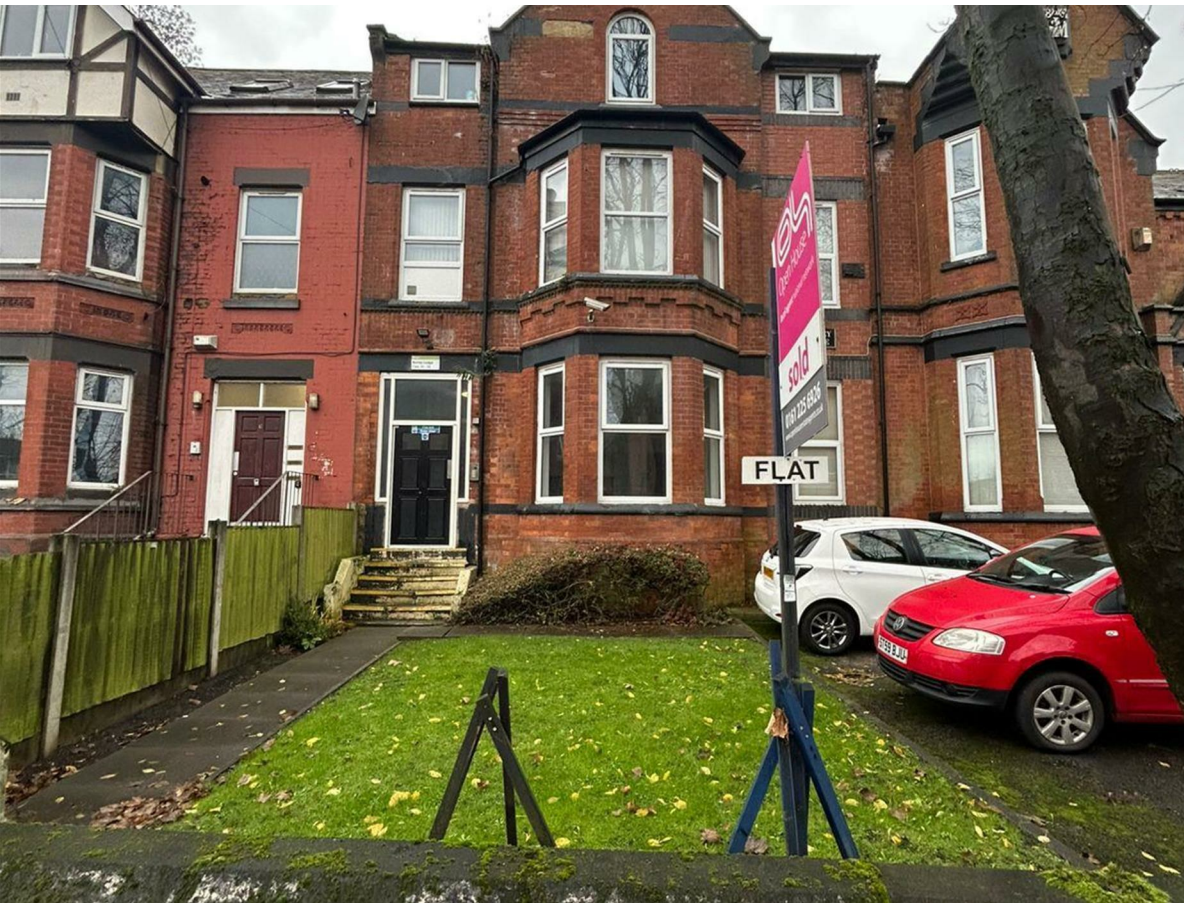


Flat 10 Birch Lane, Manchester, M13 0NN

Offers Around £90,000

Council Tax Band:



Welcome to Birch Lane, Manchester - a charming location that could be your next home sweet home! This delightful property boasts a cosy reception room, perfect for relaxing after a long day. With one spacious bedroom, you'll have plenty of room to unwind and recharge. The apartment also features a modern bathroom, adding a touch of luxury to your daily routine.

Situated in a prime location, this flat offers convenience and comfort. Whether you're a first-time buyer or looking to downsize, this property is ideal for those seeking a peaceful retreat in the heart of Manchester. Don't miss out on the opportunity to make this apartment your own - schedule a viewing today and envision the possibilities that await you at Birch Lane!

Open House Estate Agents
0161 225 6926
4 Mitre Road, Manchester M13 0NU



Open House South East Manchester

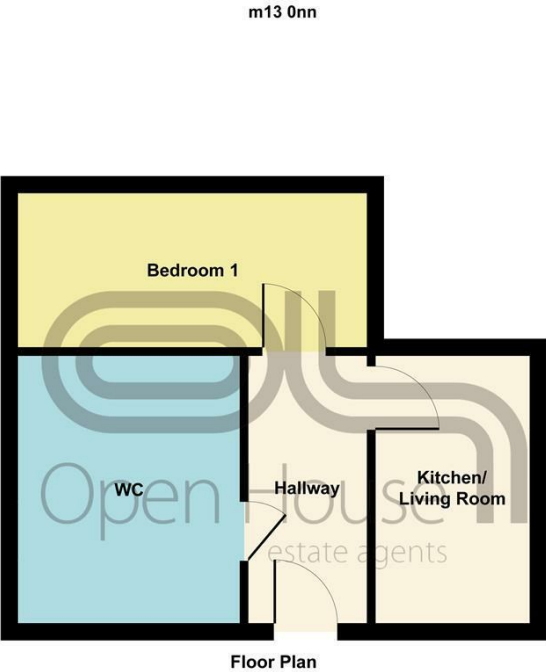
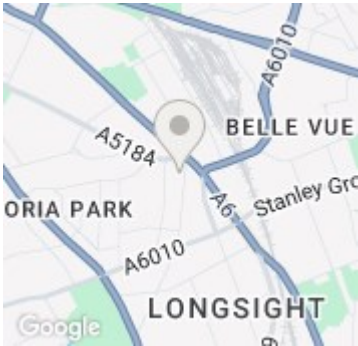


Illustration for identification purposes only; measurements are approximate, not to scale.
Produced by Elements Property



Energy Efficiency Rating			
		Current	Potential
Very energy efficient - lower running costs			
(92 plus)	A		
(81-91)	B		
(69-80)	C		
(55-68)	D		
(39-54)	E		
(21-38)	F		
(1-20)	G		
Not energy efficient - higher running costs			
England & Wales		EU Directive 2002/91/EC	