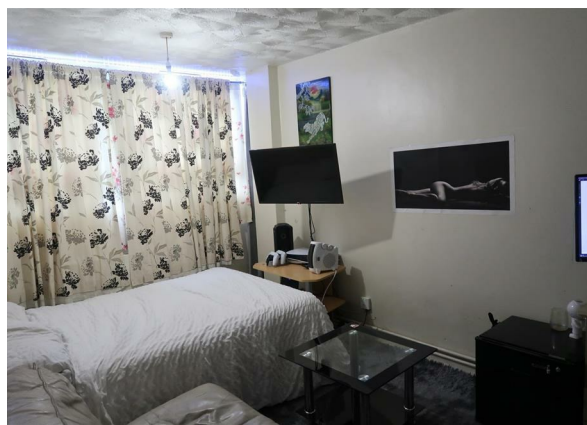


Draper Close, Belvedere, Kent, DA17 5BY

Offers Around £270,000

Council Tax Band: B



Calling all Investors!!!

Welcome to this charming 3-bedroom maisonette located in the desirable Draper Close, Belvedere. This property, built in 1975, boasts a generous 926 sq ft of living space, making it an ideal choice for investors looking for a promising opportunity.

Situated in a prime location, this 3-bedroom property offers boast of 3 spacious rooms with 1 reception room, there is ample space for entertaining guests or simply relaxing with your loved ones. The property also features 1 bathroom, ensuring practicality for everyday living.

Currently, this maisonette is tenanted, providing a ready-made investment opportunity for those looking to generate rental income. Whether you are a seasoned investor or a first-time buyer, this property offers great potential for growth and prosperity.

Don't miss out on the chance to own a piece of Belvedere's real estate market. Contact us today to arrange a viewing and discover the endless possibilities that this 3-bedroom maisonette has to offer.



Open House Rochester



Energy Efficiency Rating		
	Current	Potential
Very energy efficient - lower running costs		
(92 plus) A		
(81-91) B		
(69-80) C	69	
(55-68) D		
(39-54) E		
(21-38) F		
(1-20) G		
Not energy efficient - higher running costs		
England & Wales	EU Directive 2002/91/EC	