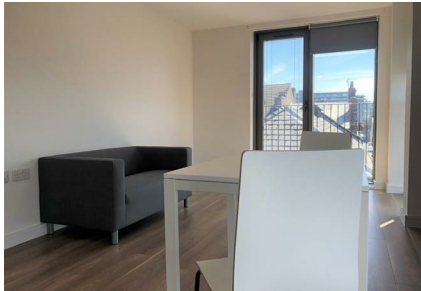


Slater Place, Liverpool, L1 4EY

£99,950

Council Tax Band: A



LOCATION & BUILDING:

Situated only a few minutes walking distance from Bold Street (0.2 miles) and Seel Street (160 yrd), this flat is located in one of Liverpool's most popular areas known for its quirkiness and nightlife. Commuters will appreciate the close proximity of Liverpool Central (0.2 miles) and Liverpool Lime Street station (0.4 miles), while culture enthusiasts will enjoy being just a short walk away from the Liverpool Cathedral and Georgian Quarter (0.6 miles) and 6 Royal Liverpool Philharmonic (0.5 miles). Designed to a high standard, the building itself is well-maintained, making it an attractive investment for any buyer. Currently rented to young professional tenants and designed for modern living, this property is a great opportunity for investors looking to add to their portfolio.

INSIDE THE APARTMENT:

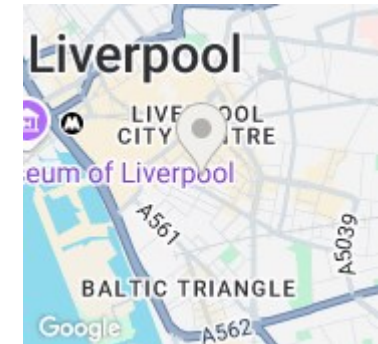
Inside, the apartment features a modern open plan kitchen complete with new appliances (inc. washing machine), ample storage space, and worktop surfaces. The high gloss white finish cupboards and 1x fridge freezers in the dining area add to the contemporary feel of the flat. The large double bedroom is decorated in a classic, calming white scheme that creates the perfect bedroom sanctuary, with matching white furniture creating a neat, uniformed look. The dark wooden floor offsets all the white, creating a serene atmosphere throughout the space. The contemporary bathroom includes a large shower room with plenty of space for storage. Additionally, a secure intercom entry system and communal lift serve all floors for added convenience and security.

The highlight of this stunning flat are the large, modern windows with a Juliet door, boasting spectacular views of some of Liverpool's most iconic buildings, this flat is truly a unique opportunity not to be missed.

Sold via Secure Sale online bidding. Terms & Conditions apply
Starting Bid £99,950* In order to secure the property and ensure



Open House Liverpool



Energy Efficiency Rating		
	Current	Potential
Very energy efficient - lower running costs		
(92 plus) A		
(81-91) B	88	
(69-80) C		
(55-68) D		
(39-54) E		
(21-38) F		
(1-20) G		
Not energy efficient - higher running costs		
England & Wales	EU Directive 2002/91/EC	