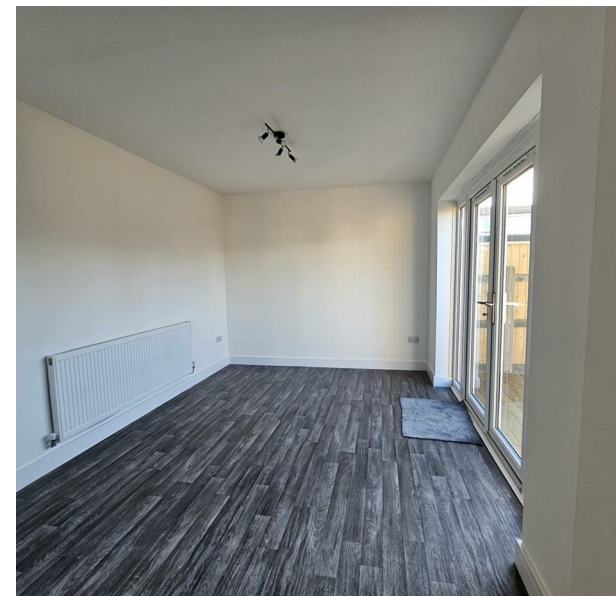


Hawker Drive, Louth, LN11 8SH
Offers Around £224,995
Council Tax Band:



Welcome to this charming detached house located on Hawker Drive in the picturesque town of Louth. This property boasts two reception rooms, perfect for entertaining guests or simply relaxing with your loved ones. With three cosy bedrooms and two bathrooms, there is ample space for the whole family to enjoy.

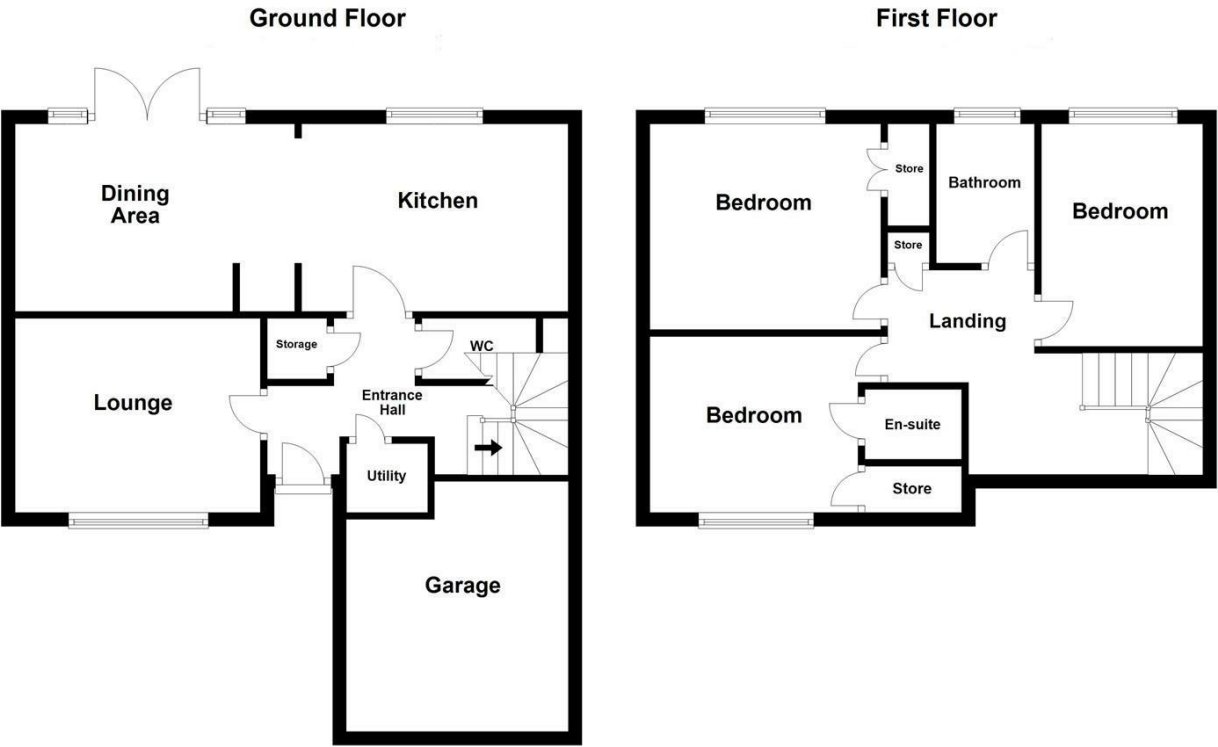
Spanning across 925 square feet, this lovely home offers a comfortable and inviting atmosphere. The modern kitchen is a highlight of the property, ideal for whipping up delicious meals and creating lasting memories. The house has been fully renovated, ensuring a fresh and contemporary feel throughout.

Situated in council tax band B and with an EPC rating of C, this property not only offers a beautiful living space but also efficiency and affordability. The driveway adds convenience to your everyday life, providing parking space for your vehicles.

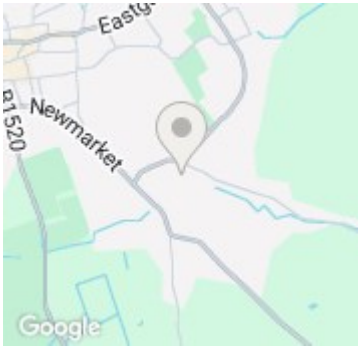
Don't miss out on the opportunity to make this house your home. Embrace the tranquillity of Louth and the comfort of this delightful property. Book a viewing today and step into your future.



Mayfair Estate Agents Powered by Open House



Total area: approx. 0.0 sq. metres (0.0 sq. feet)



Energy Efficiency Rating		
	Current	Potential
Very energy efficient - lower running costs		
(92 plus) A		
(81-91) B		
(69-80) C	72	
(55-68) D		
(39-54) E		
(21-38) F		
(1-20) G		
Not energy efficient - higher running costs		
England & Wales	EU Directive 2002/91/EC	