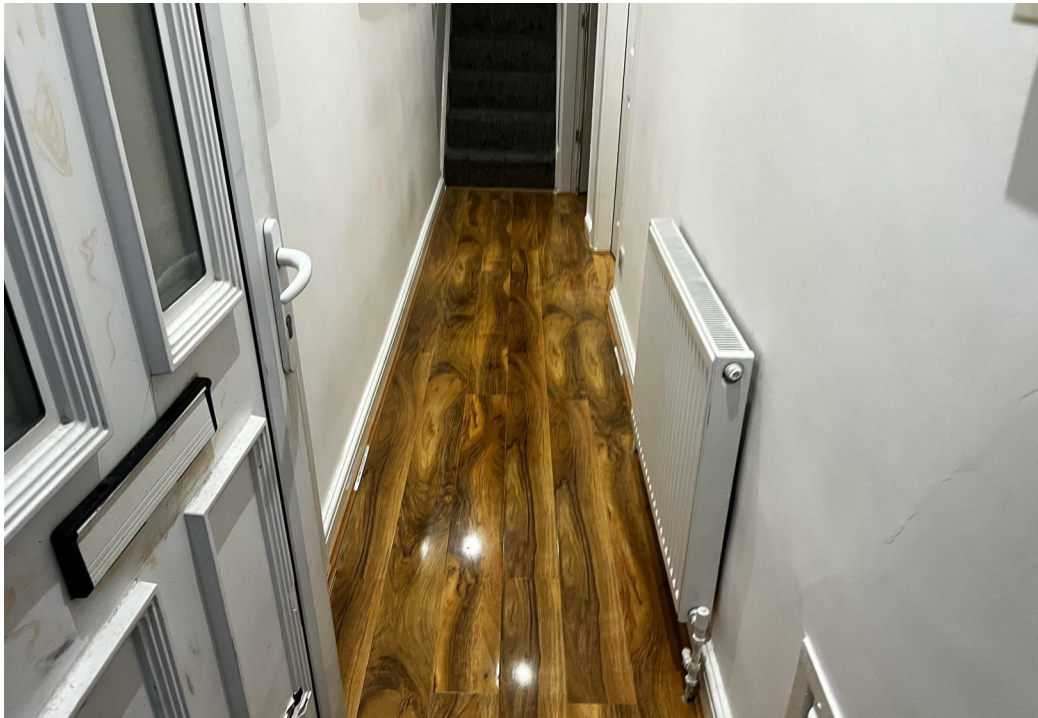
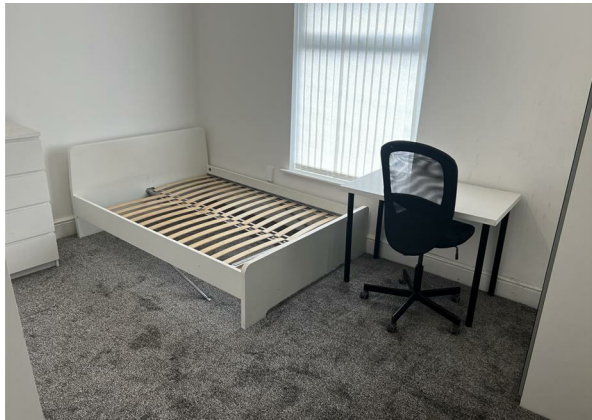
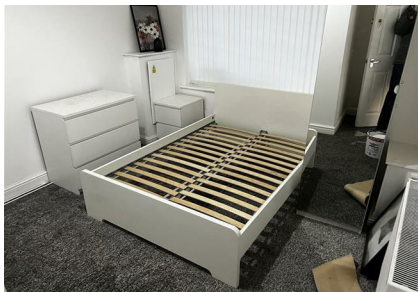


Worsley Road, Eccles, M30 8HQ
£750 Per Calendar Month
Council Tax Band:



ROOM SHARE IN A 4-BEDROOM HOUSEFULLY FURNISHED***RECENTLY RENOVATED***TWO EN-SUITE***VERY AFFORDABLE***

We are delighted to present this lovely, newly renovated property to the rental market, located in a very popular area.

This room is part of a Four-Bedroom House in Multiple Occupation (HMO), making it suitable for those looking for a very cost-effective and affordable accommodation as the price includes all bills. All rooms come fully furnished with bed, mattress, reading table, wardrobe etc.

The property is located in a very sought-after location with proximity to local amenities and transport links.

Full Description – There are 4 bedrooms house share, 2 En-suite bedrooms, and two other rooms using the main bathroom, all rooms are double bedrooms. On the ground floor is a spacious living room, and a modern kitchen. On the first floor are 3 bedrooms and the main bathroom. Externally, there is a huge low-maintenance garden to the back.

Close to the beautiful and historic Worsley Canal, local restaurants, and bars.

Viewing is highly recommended!



Open House North West Manchester



Energy Efficiency Rating		
	Current	Potential
Very energy efficient - lower running costs		
(92 plus) A		
(81-91) B		
(69-80) C	70	
(55-68) D		
(39-54) E		
(21-38) F		
(1-20) G		
Not energy efficient - higher running costs		
England & Wales	EU Directive 2002/91/EC	