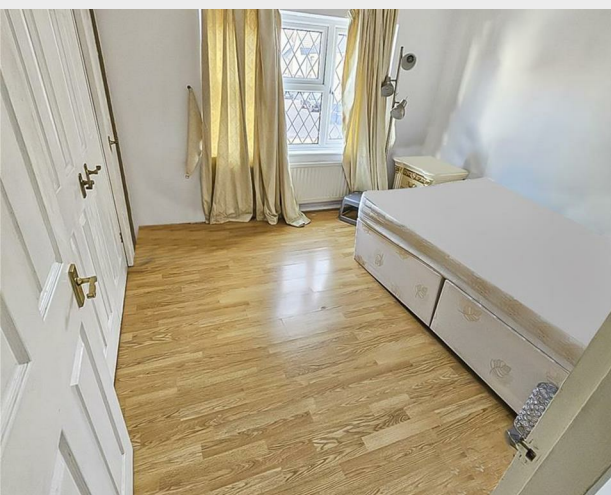


Crouch Street, Basildon, SS15 4AU
Offers In The Region Of £425,000



Welcome to this charming end terrace house located on Crouch Street in the sought-after area of Basildon, specifically in the beloved Noak Bridge neighbourhood. This property boasts a spacious 1,130 sq ft of living space, perfect for a growing family looking for their next home.

Upon entering, you are greeted by a cosy reception room, ideal for relaxing with family or entertaining guests. The house features three lovely bedrooms, offering plenty of space for everyone to have their own sanctuary. The bathroom provides convenience and comfort for the household.

One of the highlights of this property is the well-equipped kitchen, perfect for whipping up delicious meals for your loved ones. Additionally, the conservatory adds a touch of elegance and provides a tranquil space to enjoy a cup of tea while overlooking the garden.

Outside, you will find secure rear parking, ensuring that your vehicle is safe and easily accessible. This property exudes character and warmth, making it a wonderful place to call home.

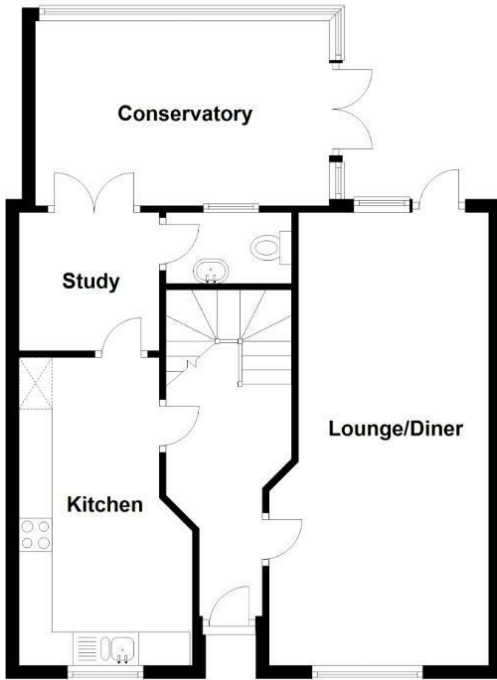
Don't miss out on the opportunity to own this delightful family home in a fantastic location. Contact us today to arrange a viewing and envision the life you could create in this lovely property on Crouch Street.



Open House Rochester

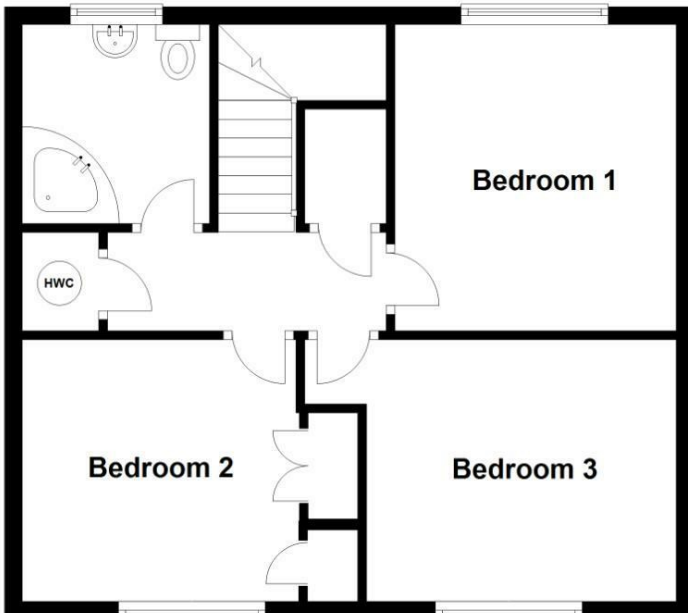
Ground Floor

Approx. 60.9 sq. metres (655.5 sq. feet)



First Floor

Approx. 48.7 sq. metres (524.1 sq. feet)



Energy Efficiency Rating		
	Current	Potential
Very energy efficient - lower running costs		
(92 plus) A		
(81-91) B		
(69-80) C		
(55-68) D		
(39-54) E		
(21-38) F		
(1-20) G		
Not energy efficient - higher running costs		
	63	76
England & Wales		EU Directive 2002/91/EC