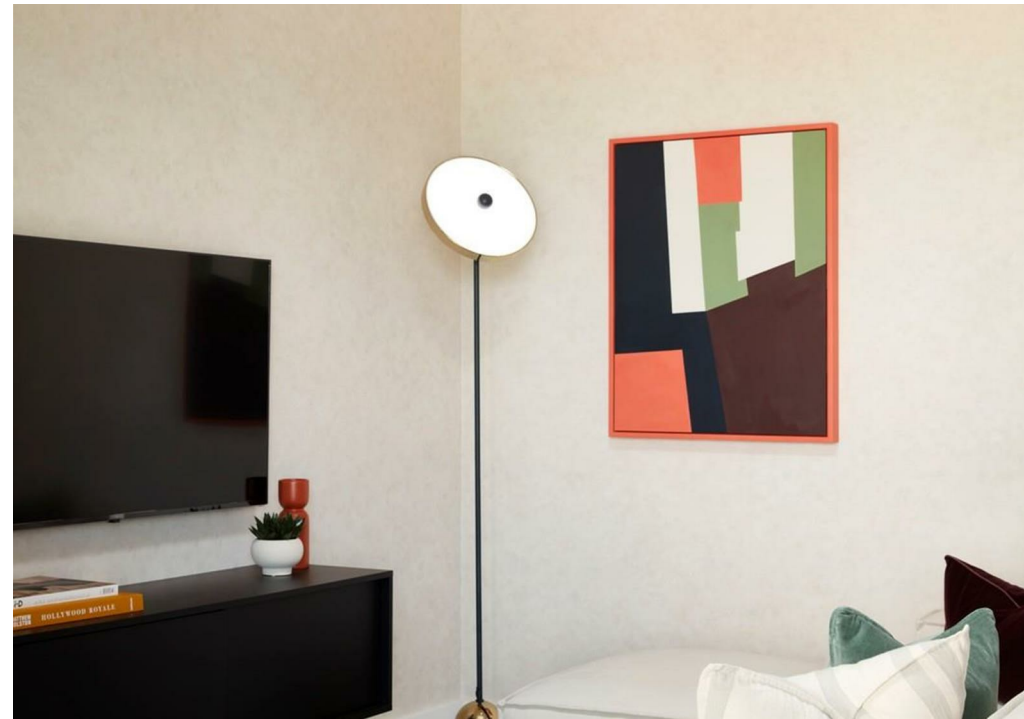
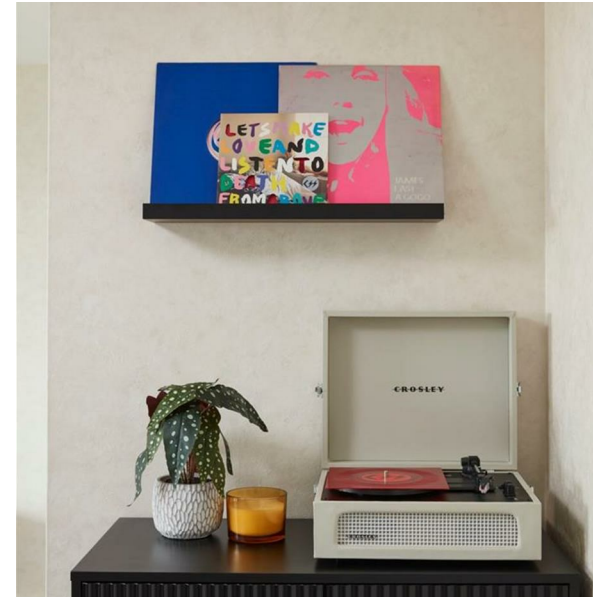


London Square, Station road, Croydon, Surry, CR0 2RB

£530,000

Council Tax Band: New Build



Lordsons are delighted to present Aldar's London Square Croydon.

This beautifully designed two bedroom apartment offers modern, high-end living with all the conveniences you'd expect. Perfect for first-time buyers or investors looking for an excellent rental opportunity.

Location:

2-minute walk to West Croydon station

12-minute walk to East Croydon station, offering quick links to Central London, Gatwick Airport, and Heathrow via the Elizabeth Line

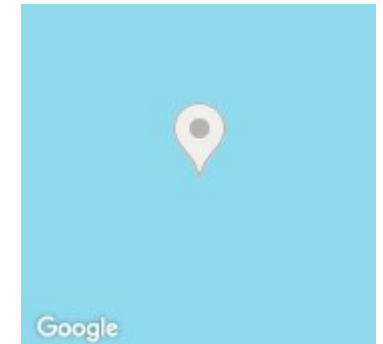
This prime location offers the best of both worlds, with easy access to Central London's vibrant nightlife and Croydon's growing creative hub, full of shops, restaurants, and transport links.

Development Overview: London Square Croydon features 108 private apartments and luxurious penthouse duplexes, located in a rapidly transforming area, perfect for those seeking a blend of city and suburban living.

Don't miss out on this fantastic opportunity! Contact Lordsons today to arrange a viewing.



Lordsons



Energy Efficiency Rating		
	Current	Potential
Very energy efficient - lower running costs		
(92 plus) A		
(81-91) B		
(69-80) C		
(55-68) D		
(39-54) E		
(21-38) F		
(1-20) G		
Not energy efficient - higher running costs		
England & Wales	EU Directive 2002/91/EC	