

Chester Road, West Bromwich, B71 2PE

Asking Price £230,000

Council Tax Band: B



We are proud to present this lovely 3-bedroom semi-detached house located on the Balls Hill Estate near West Bromwich, allowing good access to both West Bromwich and Wednesbury and all local amenities, easy to commute!

The property offers a large driveway for off-road parking and an even larger rear garden that can be extended further! Probably the biggest selling point!

As you enter the property you will see a decent sized reception area on your right and ahead will be the kitchen, before you exit towards the large garden to the right is a second reception area. Upstairs you have your 3 bedrooms and the bathroom.

Perfect for a young family!

Call us to book in a viewing now!

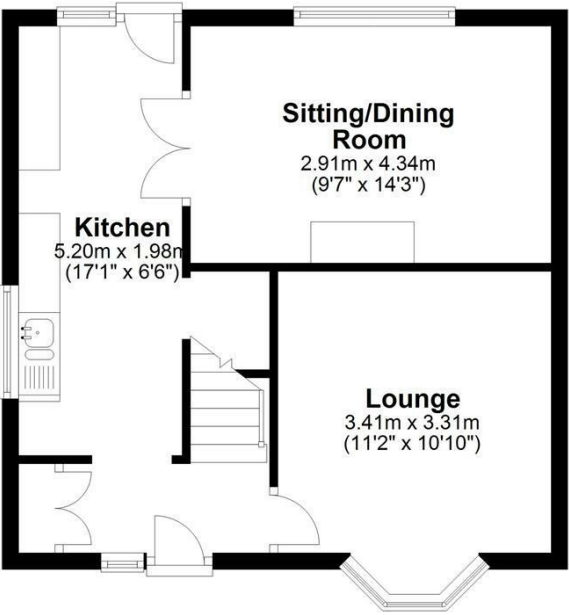
EPC Rating - D
Council Tax Band - B



Open House Bloxwich

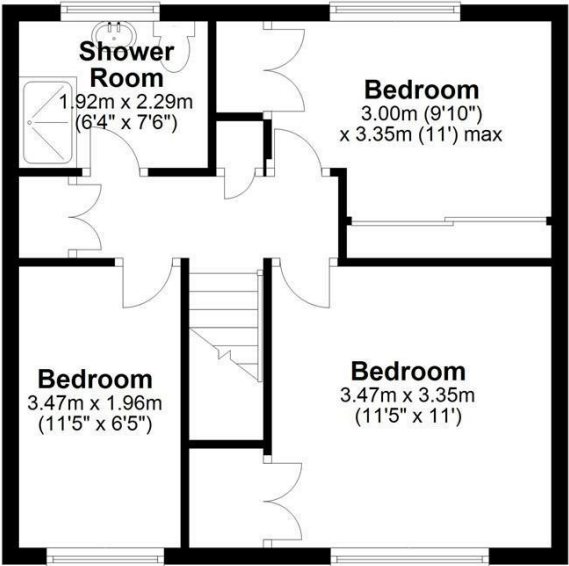
16 Chester Road

Approx. 41.4 sq. metres (445.5 sq. feet)

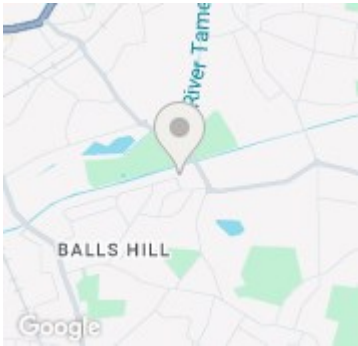


First Floor

Approx. 42.1 sq. metres (452.7 sq. feet)



Total area: approx. 83.4 sq. metres (898.2 sq. feet)



Energy Efficiency Rating		
	Current	Potential
Very energy efficient - lower running costs		
(92 plus) A		81
(81-91) B		
(69-80) C	66	
(55-68) D		
(39-54) E		
(21-38) F		
(1-20) G		
Not energy efficient - higher running costs		
England & Wales	EU Directive 2002/91/EC	