

Chester Road, West Bromwich, B71 2PE  
Offers In Excess Of £230,000  
Council Tax Band: B





We are proud to present this lovely 3-bedroom semi-detached house located on the Balls Hill Estate near West Bromwich, allowing good access to both West Bromwich and Wednesbury and all local amenities, easy to commute!

The property offers a large driveway for off-road parking and an even larger rear garden that can be extended further! Probably the biggest selling point!

As you enter the property you will see a decent sized reception area on your right and ahead will be the kitchen, before you exit towards the large garden to the right is a second reception area. Upstairs you have your 3 bedrooms and the bathroom.

Call us to book in a viewing now!

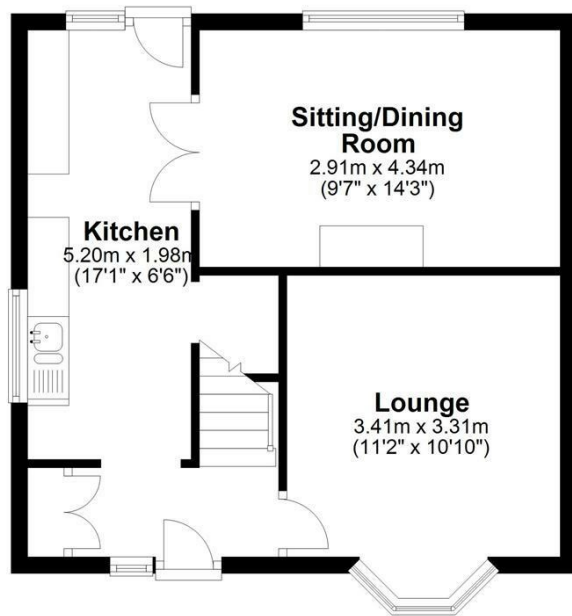
EPC Rating - D  
Council Tax Band - B



Open House Bloxwich

**16 Chester Road**

Approx. 41.4 sq. metres (445.5 sq. feet)

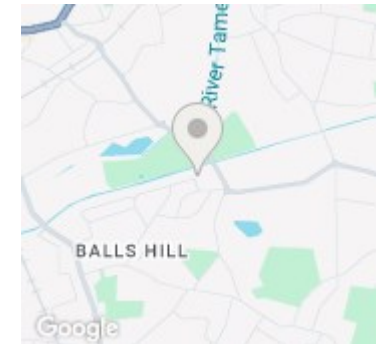


**First Floor**

Approx. 42.1 sq. metres (452.7 sq. feet)



Total area: approx. 83.4 sq. metres (898.2 sq. feet)



Energy Efficiency Rating		
	Current	Potential
Very energy efficient - lower running costs		
(92 plus) <b>A</b>		
(81-91) <b>B</b>		<b>81</b>
(69-80) <b>C</b>	<b>66</b>	
(55-68) <b>D</b>		
(39-54) <b>E</b>		
(21-38) <b>F</b>		
(1-20) <b>G</b>		
Not energy efficient - higher running costs		
<b>England &amp; Wales</b>	EU Directive 2002/91/EC	