

Claudius Walk, Northstowe, CB24 1BL

£1,250 Per Month

Council Tax Band: B



This charming two-bedroom apartment is ideally situated in the highly desirable area of Northstowe. Designed to maximise natural light, the apartment features a stylish open-plan layout perfect for modern living. The contemporary kitchen comes equipped with a range of integrated appliances, including a fridge/freezer, gas stove and oven, dishwasher, and washer/dryer. The generously sized sitting room provides a welcoming space for both entertaining guests and relaxing on cooler evenings. Additionally, the apartment features a delightful L-shaped balcony, providing ample space to enjoy the sunshine and a refreshing breeze on warm, sunny days.

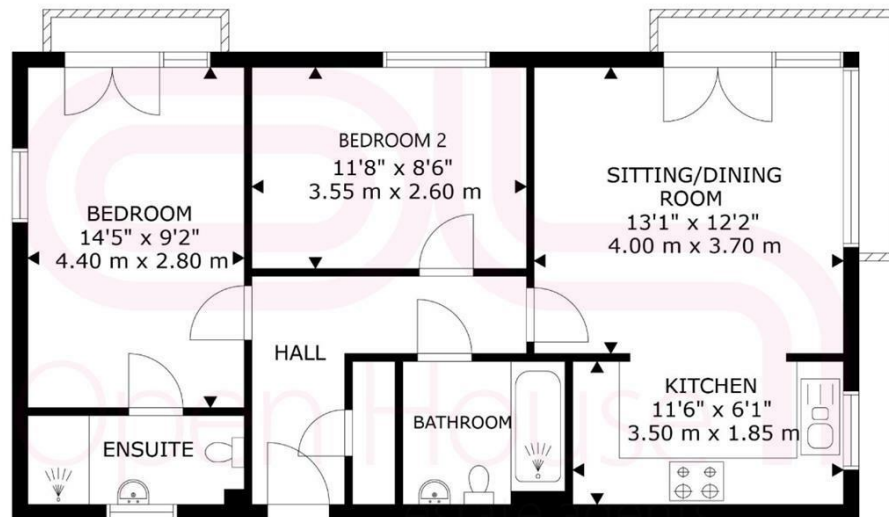
The property includes two well-appointed bedrooms and two bathrooms. The master bedroom is a spacious double with a Juliet balcony accessed via French doors, and an en-suite bathroom featuring a walk-in shower, washbasin, and WC. The second double bedroom offers a comfortable and cozy environment, with carpeting throughout.

Hallway

- Laminated flooring
- With a cloakroom leading to:

Kitchen (3.50m x 1.85m)

- Open plan with laminated flooring
- u-shaped worktop
- Built-in fridge/freezer, gas hob and oven, and dishwasher



GROSS INTERNAL AREA
APARTMENT: 646 sq ft, 60 m²
TOTAL: 646 sq ft, 60 m²



Open House Cambridgeshire



Energy Efficiency Rating		Current	Potential
<i>Very energy efficient - lower running costs</i>			
(92 plus) A		87	87
(81-91) B			
(69-80) C			
(55-68) D			
(39-54) E			
(21-38) F			
(1-20) G			
<i>Not energy efficient - higher running costs</i>			
England & Wales		EU Directive 2002/91/EC	