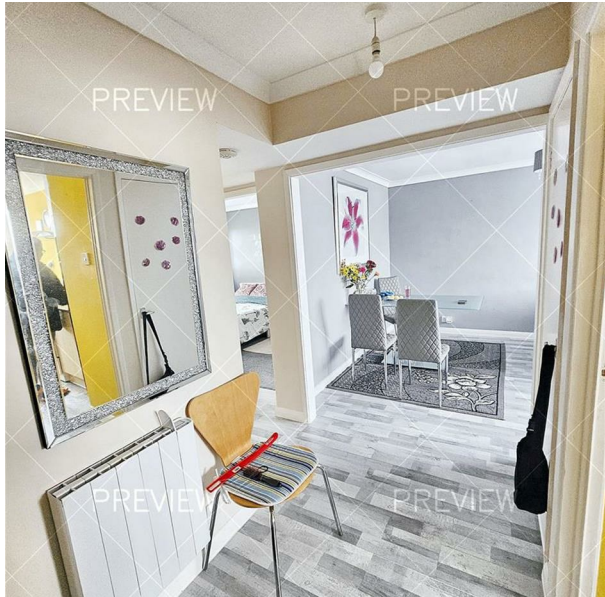


Thorgam Court, Grimsby, DN31 2EU

Offers Around £40,000

Council Tax Band:



Introducing this charming 2-bedroom leasehold apartment located in the heart of Grimsby. Situated in the well-maintained Thorgam Court, this property offers a modern kitchen, a spacious living room, and a dining area perfect for entertaining guests. The apartment boasts off-street parking, making it convenient for residents with vehicles.

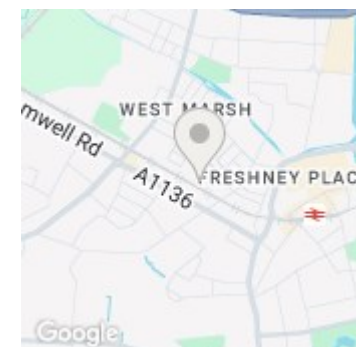
With a lease of 29 years remaining, this property is currently rented at £475 per month to lovely and tidy tenants, making it an attractive option for landlord investors. The council tax band A ensures affordable living expenses for residents.

Thorgam Court is conveniently located near local amenities and transport links, providing easy access to everything Grimsby has to offer. With a ground rent of £12.50 per 6 months and a service charge of £529 per 6 months, this property offers a great investment opportunity.

Don't miss out on the chance to view this fantastic 2-bedroom apartment. Contact us today to arrange a viewing and see for yourself the potential this property holds.



Open House East Coast



Energy Efficiency Rating		
	Current	Potential
Very energy efficient - lower running costs		
(92 plus) A		
(81-91) B		
(69-80) C		
(55-68) D		
(39-54) E	40	
(21-38) F		
(1-20) G		
Not energy efficient - higher running costs		
England & Wales	EU Directive 2002/91/EC	