

Highfield Avenue, Grimsby, DN32 0JW

Offers Around £60,000

Council Tax Band: A



Welcome to Highfield Avenue, Grimsby - a charming terraced house that exudes character and warmth. This delightful property boasts two reception rooms, perfect for entertaining guests or simply unwinding after a long day. With three cosy bedrooms, there's ample space for the whole family to relax and recharge.

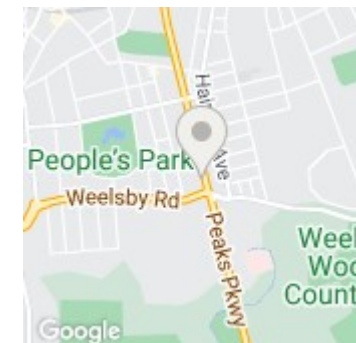
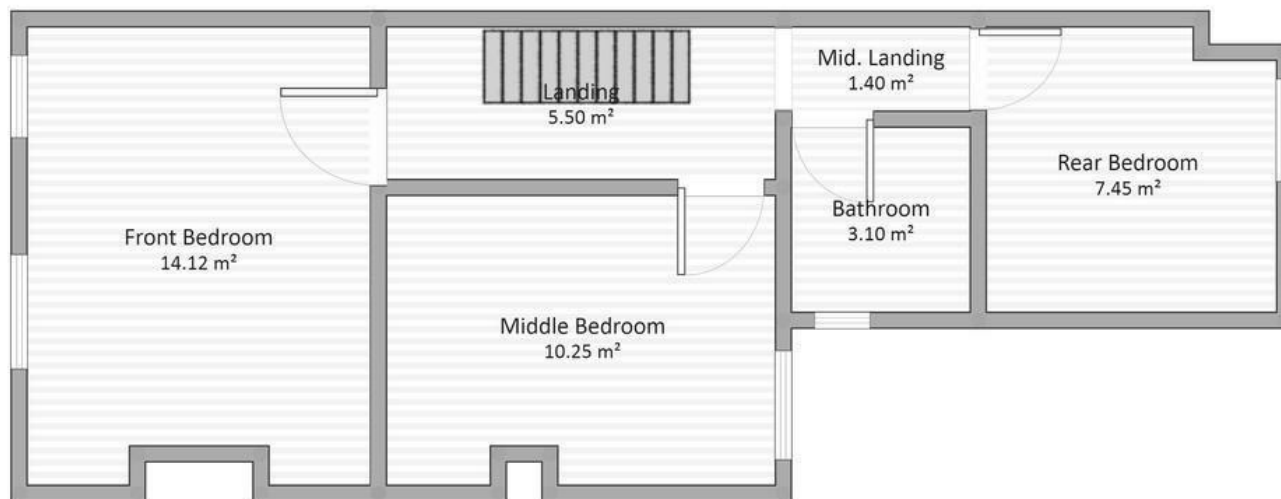
Situated in a peaceful neighbourhood, this house offers a tranquil retreat from the hustle and bustle of everyday life. The bathroom provides a serene sanctuary where you can pamper yourself and rejuvenate.

Built in 1929, this home is steeped in history and charm, offering a unique blend of vintage appeal and modern comfort. Spanning 1,076 sq ft, there's plenty of room to personalise and make it your own.

Don't miss this opportunity to own a piece of history in the heart of Grimsby. Whether you're looking for a cozy family home or a charming retreat, this terraced house on Highfield Avenue is sure to capture your heart. Book a viewing today and step into your dream home!



Open House East Coast



Energy Efficiency Rating		
	Current	Potential
Very energy efficient - lower running costs		
(92 plus) A		
(81-91) B		
(69-80) C		
(55-68) D	60	
(39-54) E		
(21-38) F		
(1-20) G		
Not energy efficient - higher running costs		
England & Wales	EU Directive 2002/91/EC	