

Whitney Park, Short Heath Road, Moira, DE12 6AP

Offers Over £199,999

Council Tax Band: A



Design your own Park Home and have it placed at the desirable Whitney Park, in the idyllic setting of Moira Village in the heart of the National Forest.

For over 50s only, the site is located in the picturesque rural village of Moira. The homes are all luxury models, in a serene setting, and there is no expense spared with the builds and surroundings, All options come fully furnished with all the added extras as standard.

There are multiple different sizes and choices of interior design on this luxurious site, situated in the sought after location of Moira. Only for the over 50s to ensure safety, peace and community, the park is near local amenities, including shops, cafes, and restaurants, as well as Conkers Tourist Attraction being right on the doorstep for any visiting children, the surrounding area is full of nature and greenery for countryside walks, and is only one and half miles from Ashby-de-la-Zouch town centre for more in-depth shopping.

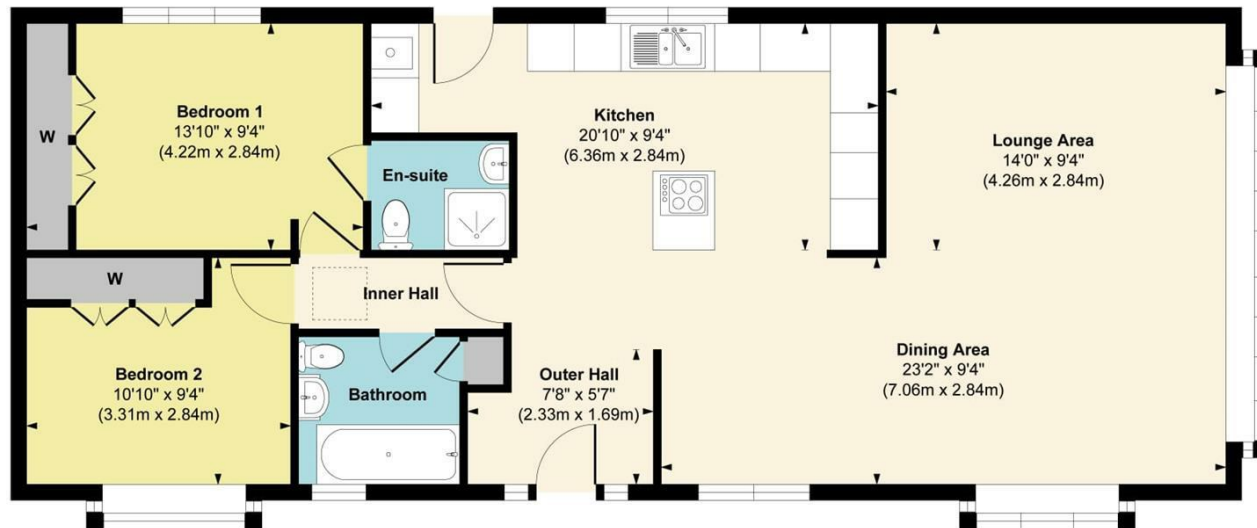
The luxury park homes are accessed through secure electric double gates with access only gained by those with a key-fob, or let in by residents. CCTV cameras are placed throughout the site which is manned by the site owner who lives on site for extra security.

NOT LEISURE, NOT HOLIDAY HOMES. 12 MONTH FULLY LICENSED RESIDENTIAL



Open House Burton & Swadlincote

**Chatsworth Gold Stately Albion 50x20**



Floor Plan

Approx. Gross Internal Floor Area 967 sq. ft / 89.92 sq. m

Illustration for identification purposes only, measurements are approximate, not to scale.  
Produced by Elements Property



**Energy Efficiency Rating**

	Current	Potential
Very energy efficient - lower running costs		
(92 plus) <b>A</b>		
(81-91) <b>B</b>		
(69-80) <b>C</b>		
(55-68) <b>D</b>		
(39-54) <b>E</b>		
(21-38) <b>F</b>		
(1-20) <b>G</b>		
Not energy efficient - higher running costs		
<b>England &amp; Wales</b>	EU Directive 2002/91/EC	