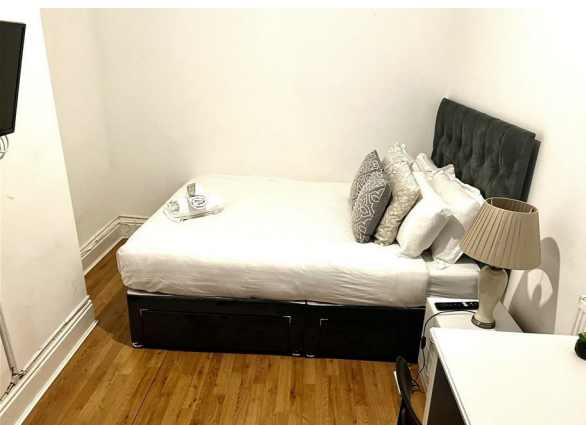
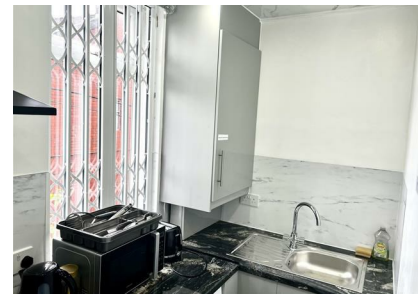


Moston Lane, Manchester, M40 9JS

£750 Per Month

Council Tax Band:



We are delighted to offer for rent this room share in an apartment in the heart of Moston. Fully renovated to a high standard.

The property is located on the Moston Lane, Nearby amenities on Moston Lane include Iceland and Asda Supermarkets in Harpurhey, North City Family and Fitness Centre, plus a whole host of shops and take-aways catering to most tastes.

There are regular bus services using buses 81, 112, 117, 118 and 119 to and from Manchester City centre.

The property is suitable for single, and professionals.

Viewing is highly recommended!



Open House North West Manchester



Energy Efficiency Rating		
	Current	Potential
Very energy efficient - lower running costs		
(92 plus) A		
(81-91) B		
(69-80) C		
(55-68) D		
(39-54) E	53	
(21-38) F		
(1-20) G		
Not energy efficient - higher running costs		
England & Wales	EU Directive 2002/91/EC	