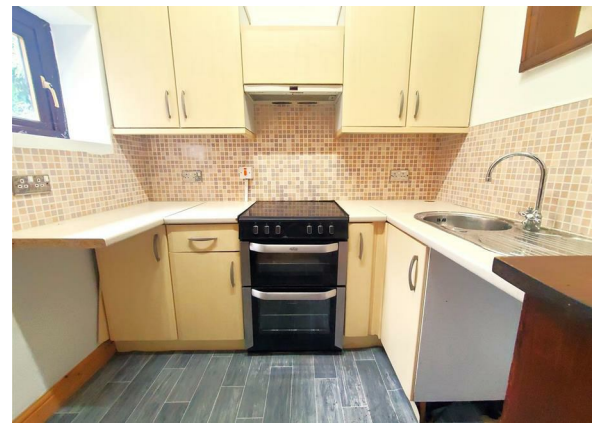


Nowells Yard, Dewsbury, WF13 2RG

£695 Per Month

Council Tax Band: A





Available for Immediate Let! - we are please to present this lovely 2 bedroom Mid Terrace situated in a quiet cul de sac in the Westtown area of Dewsbury.

This Rental Property is ideally placed with local amenities and is a mere 10 minutes walk to Dewsbury Train Station. The Local Parks and Golf Course are also not far away.

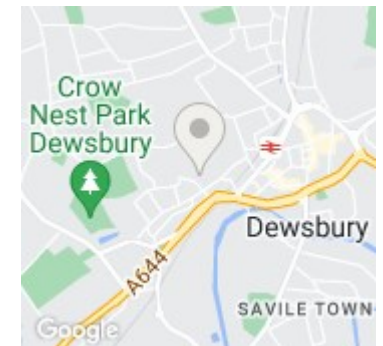
There is a small area of greenland in front of the property ideal for playing children or to have a shaded area for a picnic.

Call us now to arrange your viewing slot - Our lines are open 24/7!

Deposit £800  
Council Tax Band A



Open House Huddersfield



Energy Efficiency Rating		
	Current	Potential
Very energy efficient - lower running costs		
(92 plus) <b>A</b>		
(81-91) <b>B</b>		
(69-80) <b>C</b>		74
(55-68) <b>D</b>		
(39-54) <b>E</b>	46	
(21-38) <b>F</b>		
(1-20) <b>G</b>		
Not energy efficient - higher running costs		
<b>England &amp; Wales</b>	EU Directive 2002/91/EC	