



Hednesford Road, Cannock, WS11 6LB

£895 Per Month

Please Email Agent to Receive Your Link To Book Viewing Slot

Available Now: Three-Bedroom House for Rent on Hednesford Road, Cannock

Available now, this charming three-bedroom terraced house on Hednesford Road in Cannock offers a delightful living experience with modern amenities and a convenient location. Featuring a welcoming reception room, a cosy lounge with a fireplace, a sleek modern kitchen, and a well-appointed bathroom on the ground floor, this home is perfect for comfortable living. Upstairs, three bright and spacious bedrooms provide ample space and natural light. The property also includes an enclosed garden, ideal for outdoor activities and relaxation. Situated close to the town centre and local amenities, with excellent transport links and quality educational institutions nearby, this home blends historical charm with modern conveniences. The Nil Deposit Option is available. Contact us today to arrange a viewing and make this delightful property your next home.

Pets considered
No Smoking
Landlord will require affordability checks

****Ground Floor:****

The ground floor features a welcoming reception room, a cosy lounge with a charming fireplace, a modern kitchen with sleek white cabinetry, and a well-appointed bathroom.

****First Floor:****

Upstairs, you will find three comfortable bedrooms, each offering ample space and natural light.

****Local Area:****

Cannock is a vibrant town located just south of the Cannock Chase Area of Outstanding Natural Beauty. This area is perfect for outdoor enthusiasts, offering numerous trails for walking and cycling. The town itself has a rich history, evolving from a small rural community to a bustling hub due to its industrial growth in the 19th century

****Amenities and Connectivity:****

Hednesford Road benefits from its proximity to Cannock town centre, which provides a wide range of amenities including shops, pubs, restaurants, and entertainment options. Cannock also boasts excellent transport links, with easy access to the M6 toll road and direct train services to Birmingham, making it a convenient location for commuters

****Education:****

The area is well-served by quality educational institutions, including top-rated primary and secondary schools, as well as the esteemed Chase Grammar School, known for its academic excellence

****Outdoor Activities:****

For leisure and recreation, residents can enjoy the beautiful Cannock Chase, Birches Valley Forest Centre, and various local parks. The nearby Cannock Chase Museum offers a glimpse into the area's rich mining history

This property is not only a great investment but also offers a fantastic lifestyle with its blend of historical charm and modern amenities. Contact us today to arrange a viewing and explore the potential of this delightful home.

Reception Room 11'9" x 11'5" (3.59 (3.58) x 3.49 (3.48))



Reception Room

Step into the bright and inviting reception room, where a large bay window fitted with elegant diamond-patterned panes bathes the space in natural light. The room features fresh, neutral decor and plush new carpeting, creating a warm and welcoming atmosphere. The high ceiling and classic architectural details offer a touch of character, making it a perfect setting for relaxing or entertaining guests. The room's layout allows for versatile furniture arrangements to suit your lifestyle needs. The direct access from the front door enhances the convenience and flow of the home. This space is ready to be transformed into the heart of your new home.

Lounge 11'10" x 11'7" (3.61 x 3.53)



Lounge

The lounge is a cosy and inviting space, perfect for relaxing after a long day. A central feature of this room is the elegant fireplace with a modern

surround, creating a warm focal point. The room is adorned with neutral tones, complemented by a stylish accent wall, offering a contemporary feel. Large windows ensure plenty of natural light, enhancing the room's spacious ambiance. New carpeting adds to the comfort, while the layout provides ample space for various furniture arrangements. With easy access to the kitchen and other ground floor amenities, this lounge is ideal for both everyday living and entertaining guests.

Kitchen 10'4" x 6'4" (3.14 (3.15) x 1.92 (1.93))



Kitchen

The kitchen in this charming terraced house is both modern and functional, featuring sleek white cabinetry and ample countertop space ideal for meal preparation and storage. The room is bathed in natural light thanks to the large window, creating a bright and airy atmosphere that makes cooking a pleasure. The contemporary design includes integrated appliances and plenty of cabinet space to keep everything organized. Please note that the cooker is not included in the sale. The kitchen's efficient layout maximizes space and utility, making it a central hub for your culinary needs. Access to the rear yard from the kitchen adds convenience, perfect for outdoor dining or enjoying your morning coffee in the garden. Please note AI was used in this image to remove clutter, the sink does not show perfectly, more images to follow

Bathroom



Bathroom

The bathroom in this charming terraced house is designed for comfort and functionality. It features a full-sized bathtub, perfect for relaxing soaks, complemented by a modern shower fixture. The space is brightened by a frosted window that ensures privacy while allowing natural light to flood in. The sleek, tiled walls add a touch of elegance, making cleaning a breeze. Equipped with a contemporary white toilet and basin, the bathroom offers all the essentials in a compact and efficient layout. Additionally, the heated towel rail provides added luxury, ensuring warm towels on chilly mornings. This bathroom is a serene and practical space for your daily routines.

Please note there is a Electric shower that isnt in the image

Master Bedroom 11'10" x 11'5" (3.61 x 3.49 (3.48))



Master Bedroom

The master bedroom is a spacious and tranquil retreat, perfect for unwinding at the end of the day. Featuring ample room for a king-sized bed, this bedroom benefits from a large window that allows natural light to flood the space, enhancing the warm and inviting atmosphere. The neutral decor provides a calming backdrop, ready for you to add your personal touches. High ceilings add to the sense of space, while the soft carpeting underfoot ensures comfort. This room offers plenty of space for additional furniture such as bedside tables, dressers, and a wardrobe, making it a practical and stylish sanctuary.

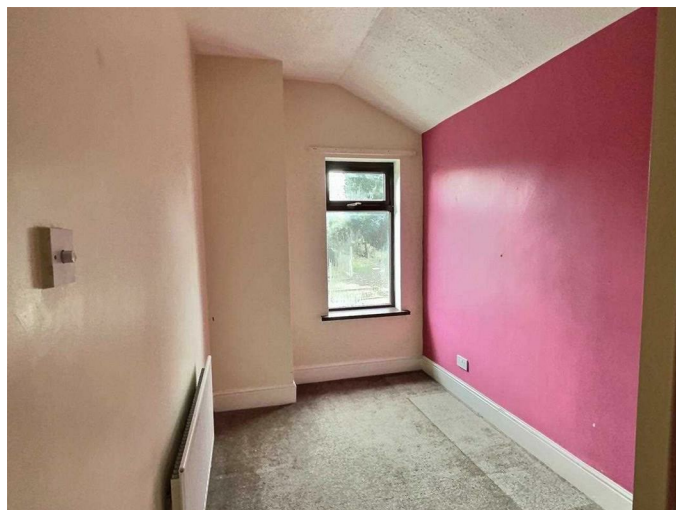
Bedroom Two 8'11" x 11'5" (2.72 x 3.49 (3.48))



Bedroom Two

Bedroom Two offers a cosy and comfortable space, perfect for a guest room, child's bedroom, or home office. This room features soft carpeting and neutral walls, providing a blank canvas ready for your personal touch. A large window allows natural light to illuminate the room, creating a bright and airy atmosphere. The room is spacious enough to accommodate a double bed and additional furniture such as a dresser or desk. The high ceiling enhances the sense of space, making the room feel larger and more open. With its inviting ambiance and practical layout, Bedroom Two is a versatile and appealing addition to this charming home.

Bedroom Three 10'4" x 6'7" (3.16 (3.15) x 2.00 (2.01))



Bedroom Three

Bedroom Three offers a cozy and intimate space, ideal for a child's room, guest room, or home office. The room features a cheerful accent wall, adding a splash of colour and character to the neutral decor. A large window allows natural light to fill the room, creating a bright and inviting atmosphere. The compact size makes it a versatile space, perfect for various uses, while the soft carpeting ensures comfort underfoot. This room provides the perfect opportunity to create a personalised and functional space to suit your needs.

Rear Of Property



Rear Yard

The rear yard of this charming terraced house offers a private and low-maintenance outdoor space, perfect for various activities. The yard features a paved patio area, ideal for setting up outdoor seating or a small table for al fresco dining. Surrounded by secure fencing, it ensures privacy and a safe environment for children or pets to play. The rear access gate provides convenient entry, making it easy to bring in bikes or gardening tools. With a bit of creativity, this yard can be transformed into a delightful outdoor retreat, perfect for enjoying warm summer days or hosting intimate gatherings.

Enclosed Garden



Enclosed Garden

The enclosed garden is a fantastic feature of this property, offering a private outdoor retreat that is perfect for gardening enthusiasts, children's play, or simply enjoying the fresh air. Located just opposite the rear yard, access to this space is via a short walk across a shared area, ensuring ease of use while maintaining privacy.

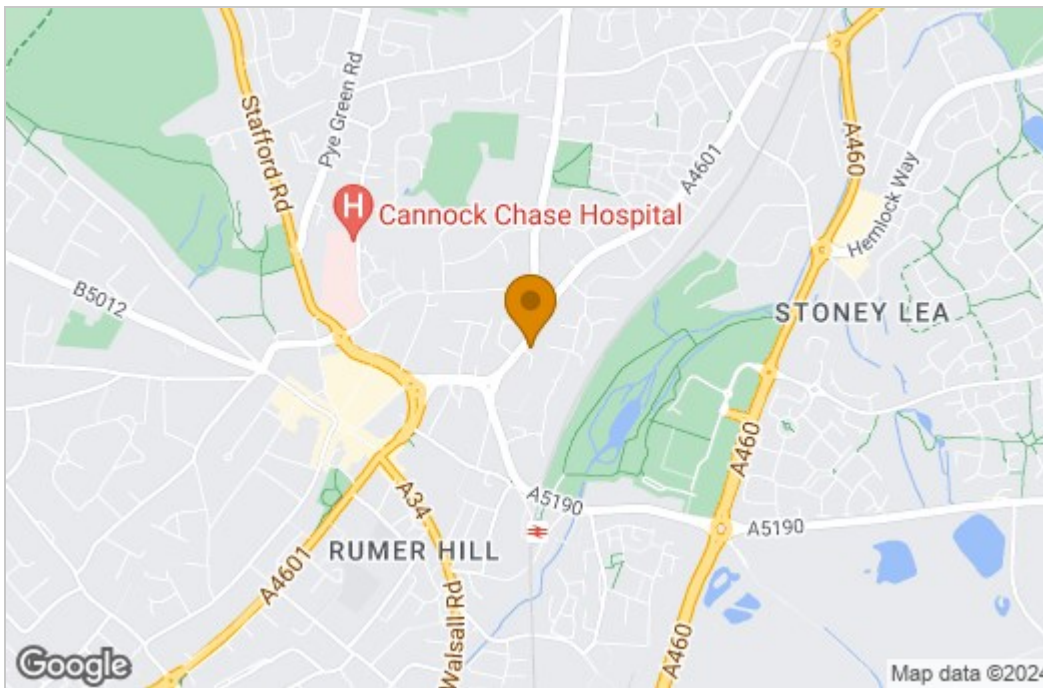
The garden is fully fenced, providing a safe and secure environment for all your outdoor activities. It features a spacious layout that offers plenty of room for a variety of uses, whether you envision a lush green space with plants and flowers, a dedicated play area for children, or an outdoor entertaining spot.

At the end of the garden, a sturdy shed provides additional storage space for gardening tools, outdoor equipment, or seasonal items. The natural tree line adds a touch of serenity and seclusion, making this garden a true haven away from the hustle and bustle of daily life. This versatile space is ready to be transformed into your perfect outdoor oasis.

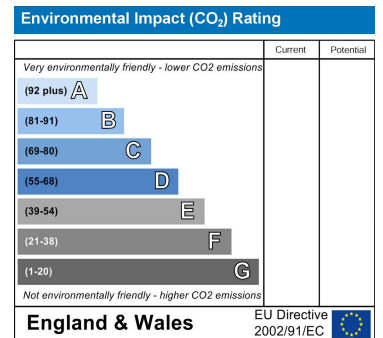
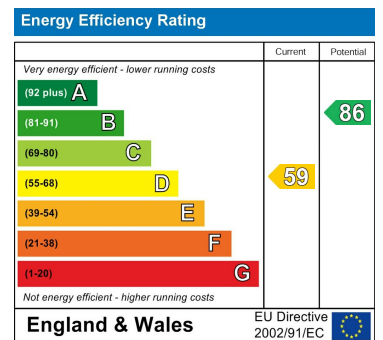
Floor Plan



Area Map



Energy Efficiency Graph



These particulars, whilst believed to be accurate are set out as a general outline only for guidance and do not constitute any part of an offer or contract. Intending purchasers should not rely on them as statements of representation of fact, but must satisfy themselves by inspection or otherwise as to their accuracy. No person in this firm's employment has the authority to make or give any representation or warranty in respect of the property.