

Keats Close, Horsham, RH12 5PL

£785,000

Council Tax Band: F

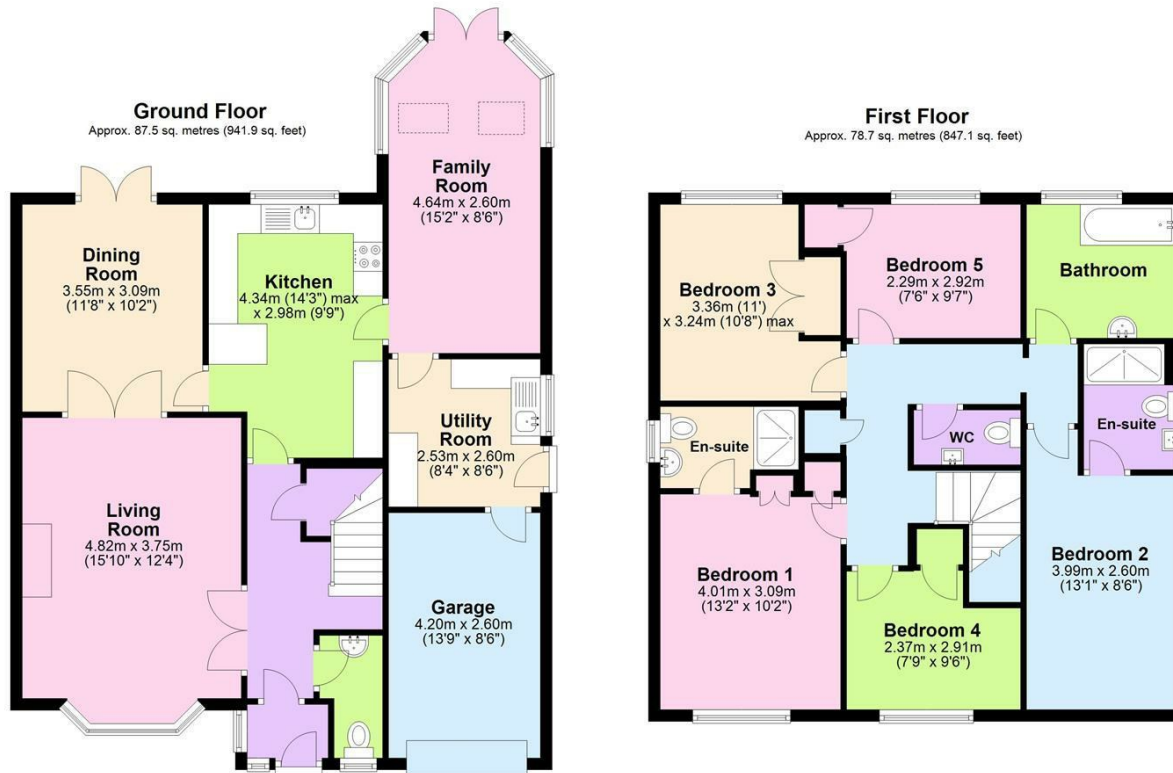


LOCATION

We are delighted to bring to the market this attractive, spacious and very well-presented five bedroom family home in a popular location in North Horsham. Tucked away in a cul-de-sac, this family home is ideally positioned for good primary and secondary schools, Holbrook, All Saints and Bohunt. In addition, for those needing to commute by train, Littlehaven station with its regular trains to London Victoria and London Bridge is a 10 minute walk. Finally, there is easy access to the A264 and A24 and it is about 2 miles to the centre of Horsham with its wealth of cafes, restaurants and shops. Local shops, sports and social club and a pub are a ten minute walk via the Holbrook river walk.



Open House Horsham



Total area: approx. 166.2 sq. metres (1789.0 sq. feet)

Total measurements include garage
Whilst every attempt has been made to ensure the accuracy of the floor plan contained here, measurement of doors, windows, rooms and any other items are approximate and no responsibility is taken for any error, omission, or mis-statement. This plan is for illustrative purposes only and should be used as such by any prospective purchaser. The services, systems and appliances have not been tested and no guarantee as to their operability or efficiency can be given.
Plan produced using PlanUp.



Energy Efficiency Rating		
	Current	Potential
Very energy efficient - lower running costs		
(92 plus) A		
(81-91) B		
(69-80) C		
(55-68) D		
(39-54) E		
(21-38) F		
(1-20) G		
Not energy efficient - higher running costs		
	72	83
England & Wales	EU Directive 2002/91/EC	