

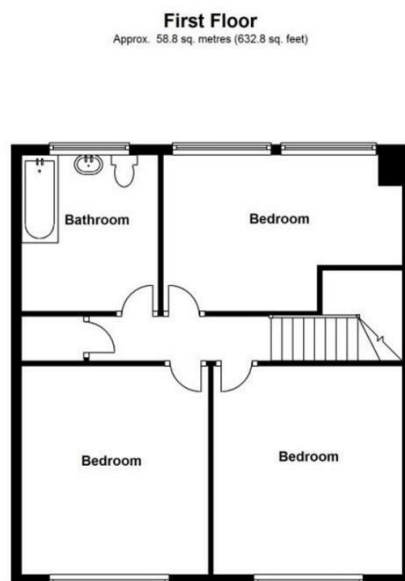
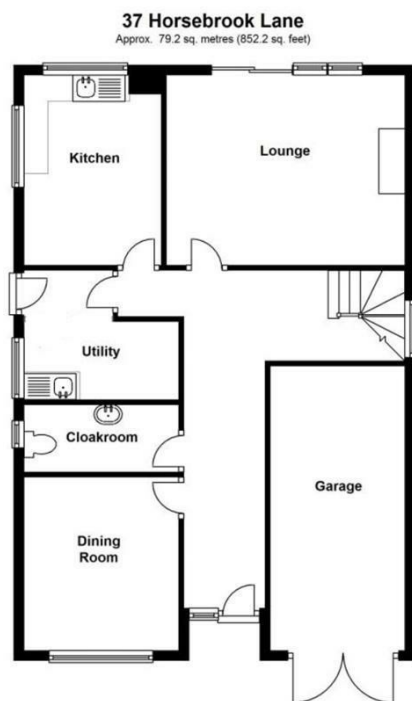
Horsebrook Lane, Brewood, Stafford, ST19 9EF  
Offers In The Region Of £425,000  
Council Tax Band: E



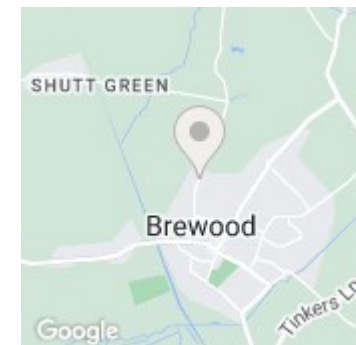
Nestled on the picturesque Horsebrook Lane in Brewood, Stafford, this charming detached dormer bungalow offers an idyllic blend of countryside tranquillity and modern living. The property features three spacious bedrooms, a welcoming lounge, a formal dining room, a guest WC, a fully equipped kitchen, a utility room, and an integral garage on the ground floor. The first floor houses three well-appointed bedrooms and a family bathroom. With ample off-road parking and a beautifully maintained garden, this home is perfect for families seeking a serene environment.



Open House Staffordshire



Total area: approx. 138.0 sq. metres (1484.9 sq. feet)



Energy Efficiency Rating		Current	Potential
<i>Very energy efficient - lower running costs</i>			
(92 plus)	A		
(81-91)	B		80
(69-80)	C		
(55-68)	D	54	
(39-54)	E		
(21-38)	F		
(1-20)	G		
<i>Not energy efficient - higher running costs</i>			
<b>England &amp; Wales</b>		EU Directive 2002/91/EC	