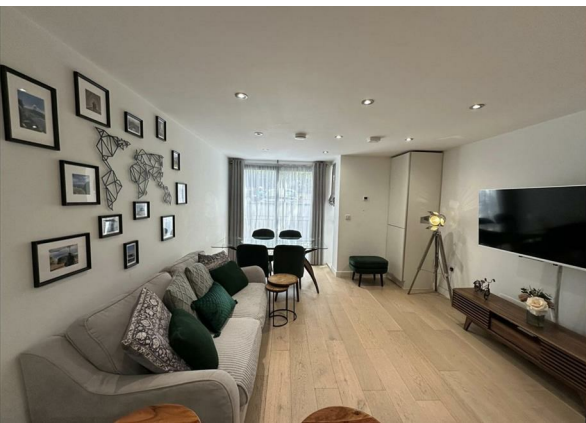
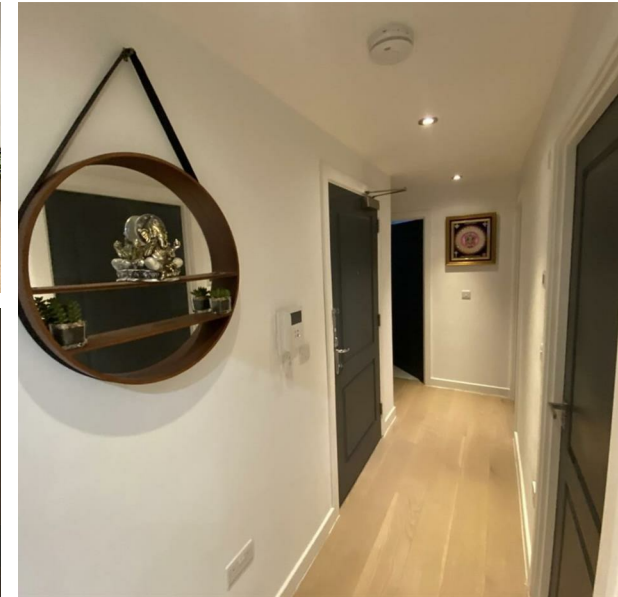


18A South Bank, Surbiton, KT6 6DB

£2,500 Per Month

Council Tax Band: D



Welcome to 18A South Bank, Surbiton - a charming property that could be your next dream home! This delightful flat/apartment boasts 1 reception room, 2 cosy bedrooms, and 1 bathroom, making it the perfect space for a small family or professionals looking for a comfortable living arrangement.

Situated in the heart of Surbiton, this property offers convenience and accessibility to all the local amenities, including shops, restaurants, and excellent transport links. The vibrant neighbourhood is sure to keep you entertained with its bustling atmosphere and friendly community.

Although the exact square footage is not specified, the layout of this property ensures a cosy and inviting atmosphere that you'll love coming home to. Whether you're relaxing in the spacious reception room or unwinding in one of the well-appointed bedrooms, this property has a lot to offer in terms of comfort and style.

Don't miss out on the opportunity to make this lovely flat/apartment your own. Come and experience the warmth and charm of 18A South Bank - your future home sweet home!



Open House Epsom



| Energy Efficiency Rating                    |                         |           |
|---|-------------------------|-----------|
|   | Current                 | Potential |
| Very energy efficient - lower running costs |                         |           |
| (92 plus) <b>A</b>                          |                         |           |
| (81-91) <b>B</b>                            | <b>85</b>               |           |
| (69-80) <b>C</b>                            |                         |           |
| (55-68) <b>D</b>                            |                         |           |
| (39-54) <b>E</b>                            |                         |           |
| (21-38) <b>F</b>                            |                         |           |
| (1-20) <b>G</b>                             |                         |           |
| Not energy efficient - higher running costs |                         |           |
| <b>England &amp; Wales</b>                  | EU Directive 2002/91/EC |           |