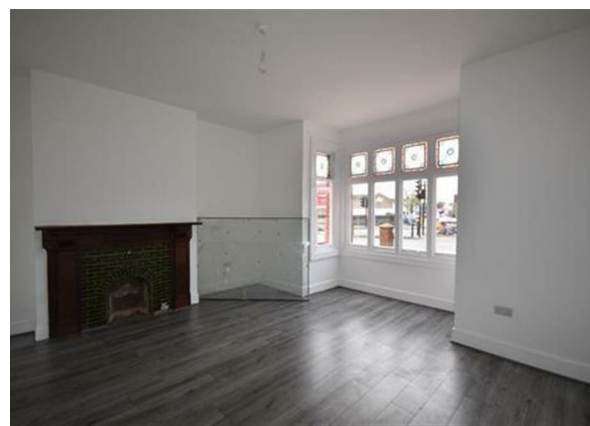
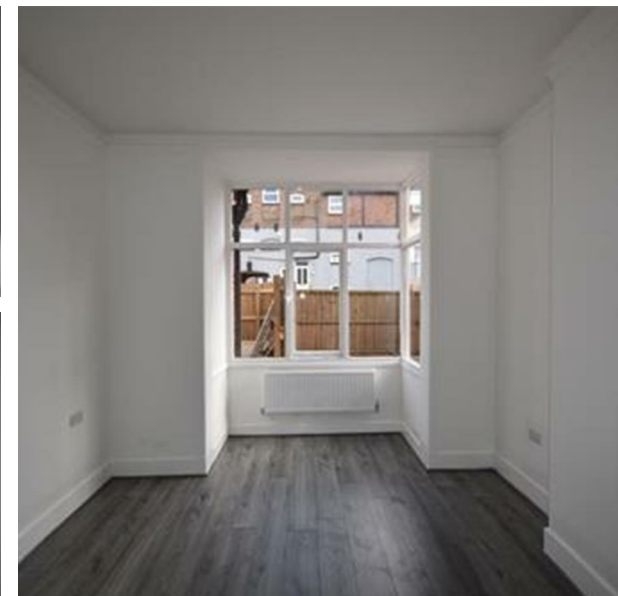
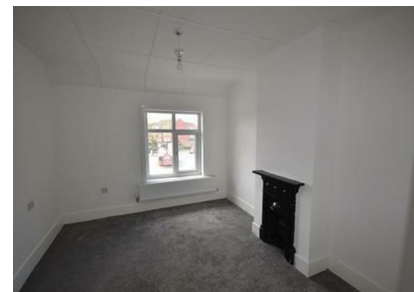


Thorpe Road, Melton Mowbray, LE13 1SG

£500

Council Tax Band:



Welcome to this charming property located on Thorpe Road in the picturesque town of Melton Mowbray. This delightful HMO boasts a generous 1,797 sq ft of living space, offering ample room for all your needs.

Built in 1900, this property exudes character and history, providing a unique living experience. With 5 bedrooms, this property offers the perfect house to be shared by multiple occupants. The property features 1 bathroom and 2 toilets, ensuring convenience and comfort for all residents.

It also offers a reception room and a significant parking space for the occupants.

Located in the heart of Melton Mowbray, this property offers easy access to local amenities, schools, and transport links, making it an ideal choice for those seeking a convenient yet peaceful lifestyle.

Don't miss the opportunity to make this charming property your new home. Contact Open House Estate Agents 4 Mitre Road, Manchester M13 0NU at 0161 225 6926 today to arrange a viewing and experience the unique charm and character this property has to offer.



Open House South East Manchester



Energy Efficiency Rating		
	Current	Potential
Very energy efficient - lower running costs		
(92 plus) A		
(81-91) B		
(69-80) C		
(55-68) D		
(39-54) E	50	
(21-38) F		
(1-20) G		
Not energy efficient - higher running costs		
England & Wales	EU Directive 2002/91/EC	