

Apartment 2, 143 Waterloo Road, Manchester, M8 8BT
Offers In Excess Of £140,000
Council Tax Band: A



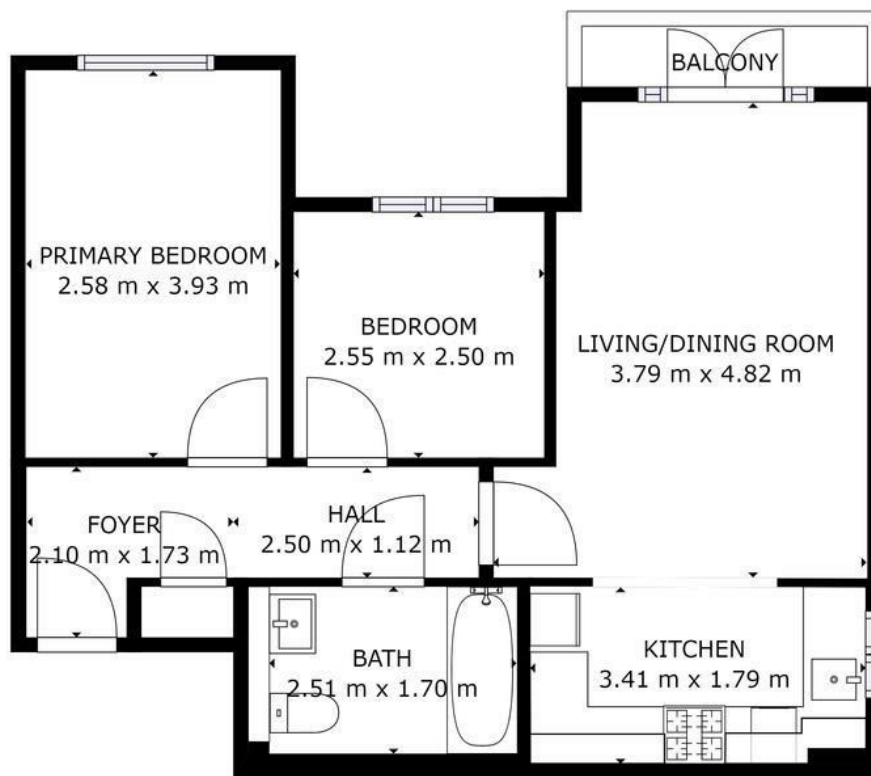
This apartment forms part of the residential Waterloo Park estate which is set in well maintained landscaped communal gardens.

The apartment is located within walking distance to Deansgate and The Printworks. The accommodation is well presented and comprises an entrance hallway, lounge with dining area, separate kitchen, two double bedrooms, and a bathroom with shower cubicle.

Viewing is recommended

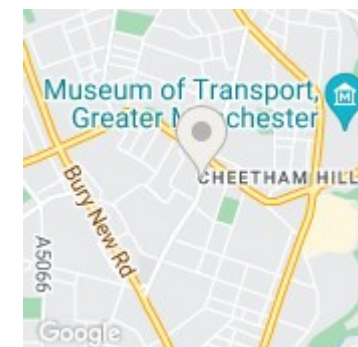


Open House North West Manchester



GROSS INTERNAL AREA
 FLOOR 1: 52 m²
 TOTAL: 52 m²
SIZES AND DIMENSIONS ARE APPROXIMATE, ACTUAL MAY VARY.

FLOOR 1



Energy Efficiency Rating		Current	Potential
<i>Very energy efficient - lower running costs</i>			
(92 plus)	A		
(81-91)	B		
(69-80)	C		
(55-68)	D		
(39-54)	E		
(21-38)	F		
(1-20)	G		
<i>Not energy efficient - higher running costs</i>			
England & Wales		EU Directive 2002/91/EC	