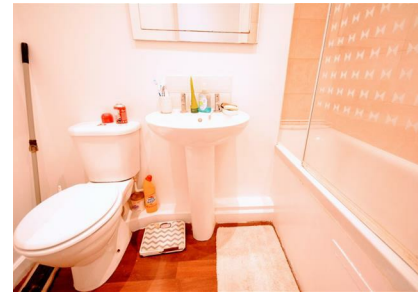


**Connaught Towers 682-684 London Road, Thornton Heath, CR7 7HU**  
**Offers In The Region Of £285,000**  
**Council Tax Band: B**



### Live it Up in a Connected Location!

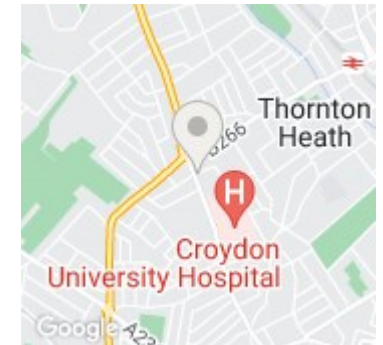
This superb apartment offers a fantastic lifestyle blend: convenience and comfort. Enjoy easy commutes and close proximity to everything you need. Transportation is a breeze with excellent links and multiple train stations just a short ride away, whisking you to various destinations. Plus, Croydon Shopping Centre is a quick bus ride for all your shopping needs.

Step inside to your bright and airy haven. This well-proportioned apartment boasts a modern kitchen, a good-sized reception room that's perfect for relaxing or entertaining, two spacious bedrooms, and a contemporary bathroom.

Ideal for First-Time Buyers! Don't miss this fantastic opportunity to get onto the property ladder. This delightful apartment won't last long. Schedule a Viewing Today! Call us now to secure your appointment.



Open House Surrey



| Energy Efficiency Rating                    |                         |           |
|---|-------------------------|-----------|
|   | Current                 | Potential |
| Very energy efficient - lower running costs |                         |           |
| (92 plus) <b>A</b>                          |                         |           |
| (81-91) <b>B</b>                            |                         |           |
| (69-80) <b>C</b>                            |                         |           |
| (55-68) <b>D</b>                            |                         |           |
| (39-54) <b>E</b>                            |                         |           |
| (21-38) <b>F</b>                            |                         |           |
| (1-20) <b>G</b>                             |                         |           |
| Not energy efficient - higher running costs |                         |           |
| <b>England &amp; Wales</b>                  | EU Directive 2002/91/EC |           |