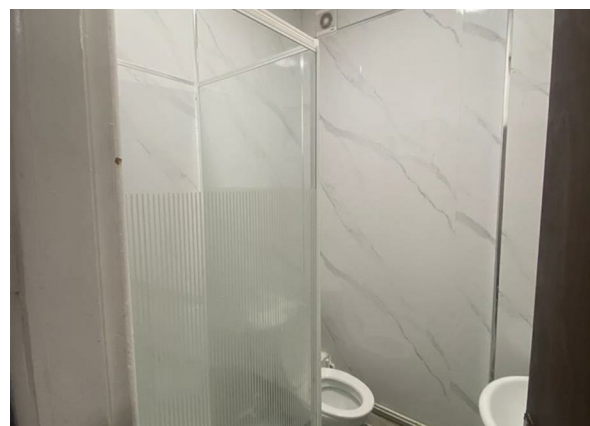


Ash Tree Road, Manchester, M8 5SA

£895 Per Month

Council Tax Band:



Welcome to this charming studio apartment located at Flat 3, 52 Ash Tree Road in the vibrant city of Manchester. This property boasts a cosy yet spacious living area, perfect for those seeking a comfortable and convenient living space.

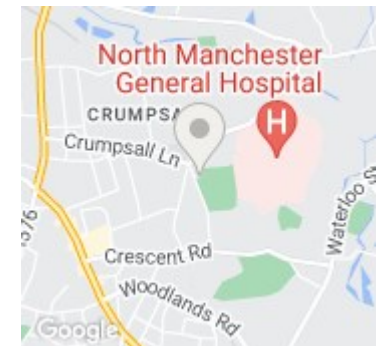
With 1 bedroom and 1 bathroom, this studio apartment offers a private sanctuary for individuals or couples looking to settle in a bustling urban environment. The property spans across 517 sq ft, providing ample room for relaxation and entertainment.

Situated in a prime location, residents will have easy access to all the amenities and attractions that Manchester has to offer. Whether you enjoy exploring the city's cultural landmarks, dining at trendy restaurants, or shopping in stylish boutiques, this property is ideally positioned for you to make the most of city living.

Don't miss out on the opportunity to make this studio apartment your new home. Contact us today to arrange a viewing and experience the charm and convenience of living here.



Open House South East Manchester



Energy Efficiency Rating		
	Current	Potential
Very energy efficient - lower running costs		
(92 plus) A		
(81-91) B		
(69-80) C		
(55-68) D		
(39-54) E	46	
(21-38) F		
(1-20) G		
Not energy efficient - higher running costs		
England & Wales	EU Directive 2002/91/EC	