

Apartment, Edgware Road, Marble Arch, London, W2 2RB
Offers In The Region Of £538,000
Council Tax Band: E



A very attractive double bed roomed apartment in this smart mansion block in Marble Arch.

Close to Marble Arch and Hyde Park and superbly located for all of the amenities of Oxford Street, Mayfair and the West End.

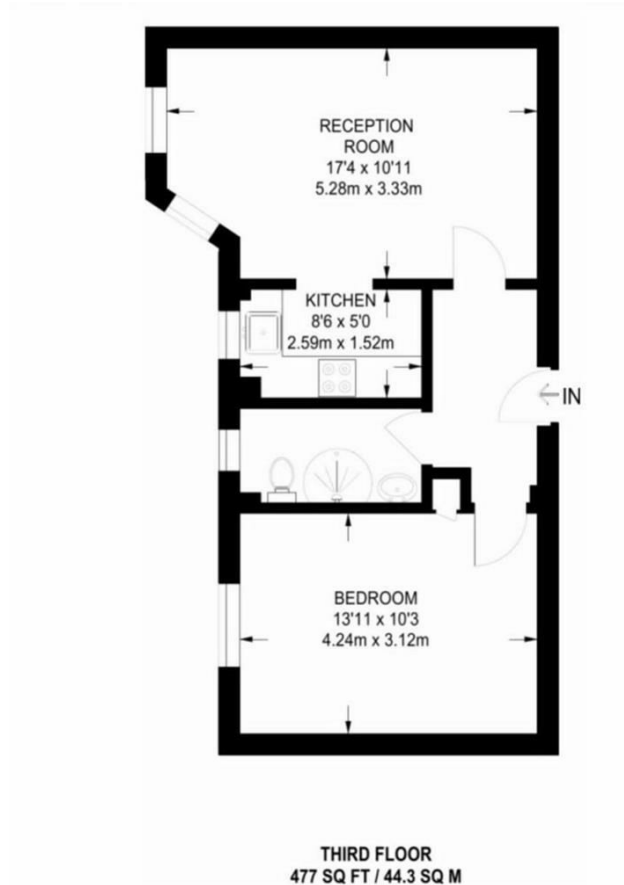
The property has a large double bedroom, hallway, tiled bathroom with shower, large living room and a kitchen.

The property is leasehold. the purchaser has recently extended the lease to 175 years.

Located on the this floor in this quiet and popular mansion block. The common parts have recently been refurbished and re-carpeted. 24 hour concierge.



Open House Mayfair



Energy Efficiency Rating		
	Current	Potential
Very energy efficient - lower running costs		
(92 plus) A		
(81-91) B		
(69-80) C	72	
(55-68) D		
(39-54) E		
(21-38) F		
(1-20) G		
Not energy efficient - higher running costs		
England & Wales	EU Directive 2002/91/EC	