

Barn View Tallentire, Cockermouth, Cumbria, CA13 0PR

Asking Price £725,000

Council Tax Band: E



Looking for your dream home? How about a beautiful barn conversion in the exclusive, semi-rural village of Tallentire, close to Cockermouth?

Barn View is a brilliant example of a sympathetic conversion that oozes style and celebrates the space of the original building.. A very modern, detached home, housed in a characterful, Grade 2 listed building, that is both imposing and welcoming.

The current owners have totally reconfigured the internal space, flipping the living space and the bedrooms to create a totally unique, upside-down home, making the most of the features, light and outlook.

The final renovation works have included:

- New wall configurations with fresh plaster
- Rewiring of electrics and new plumbing
- Upgraded heating system, including vintage style, cast iron radiators throughout
- Most external windows and all doors replaced
- New, glazed front entrance
- Upgraded insulation
- Landscaping of front garden

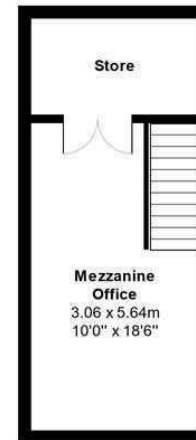


Open House West Cumbria

Barn View, Tallentire: First Floor Plan



Mezzanine



Not to Scale: Dimensions and layout for guidance only

Energy Efficiency Rating		Current	Potential
<i>Very energy efficient - lower running costs</i>			
(92 plus)	A		
(81-91)	B		
(69-80)	C		
(55-68)	D	59	64
(39-54)	E		
(21-38)	F		
(1-20)	G		
<i>Not energy efficient - higher running costs</i>			
<b>England &amp; Wales</b>		EU Directive 2002/91/EC	